

## Панель Sens CT-201-IN Black (12-24V, 0-10V)

- 0-10V Dimmer mode
- Supply voltage: 12-24VDC
- Output voltage: DC0-10V
- Output current: 150mA

### Summarization

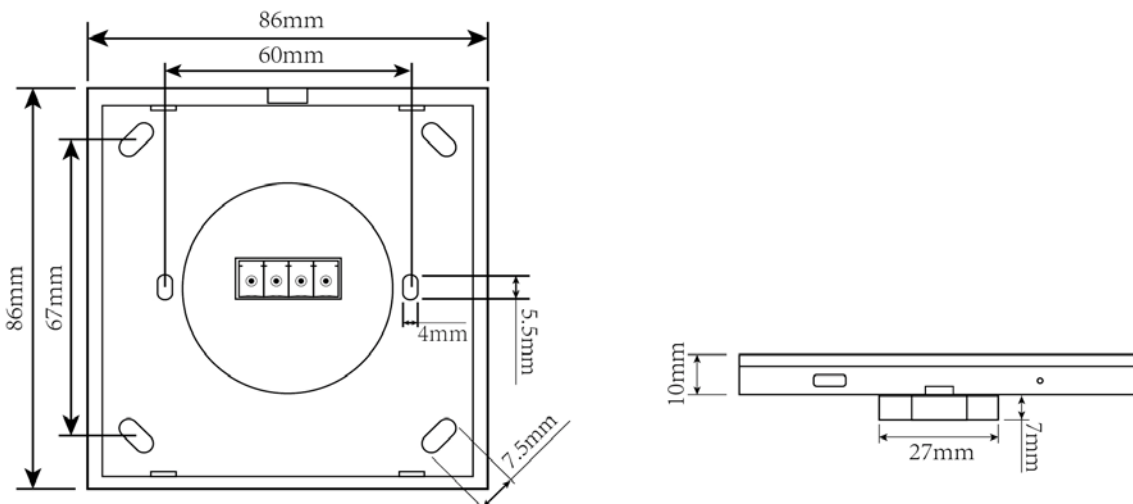
WALLDIM201 is one of our high-end, multi-function WallDim touch panel controller series, with characteristics of fashionable and beautiful appearance, complete functions, easy operations, sensitive key touch, 0-10V signal controller and various forms. It is mainly used to connect LED 0-10V DIM controller. It can realize 0-10V smooth dimming according to different requirements.



### Technical Parameters

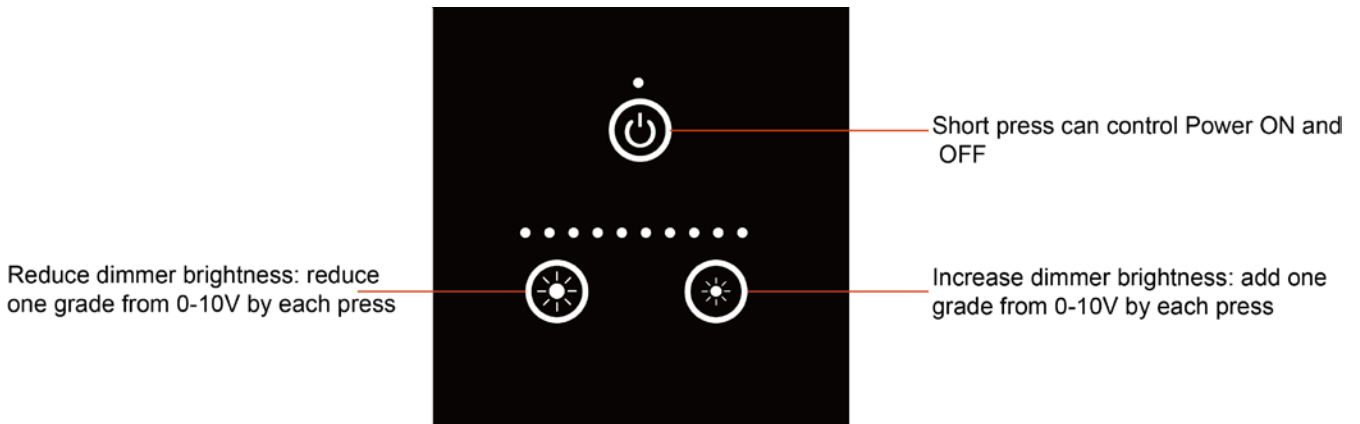
Supply voltage	12-24VDC
Output voltage	DC0 -10V
Output current	150mA
Static power	<1W
Output channel	1 channel
Product dimension	L86 X W86 X H10 mm
Packing size	L145 X W135X H48mm
Working temperature	-10-40 °C
Net weight	95g
Gross weight	125g

### Dimension



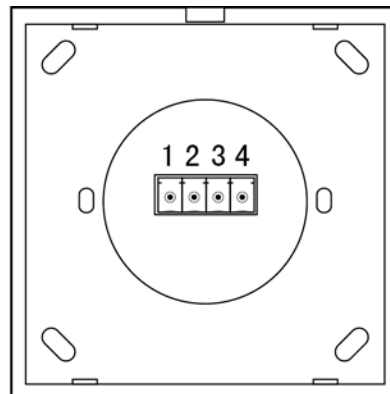
## Function Description

### Appearance



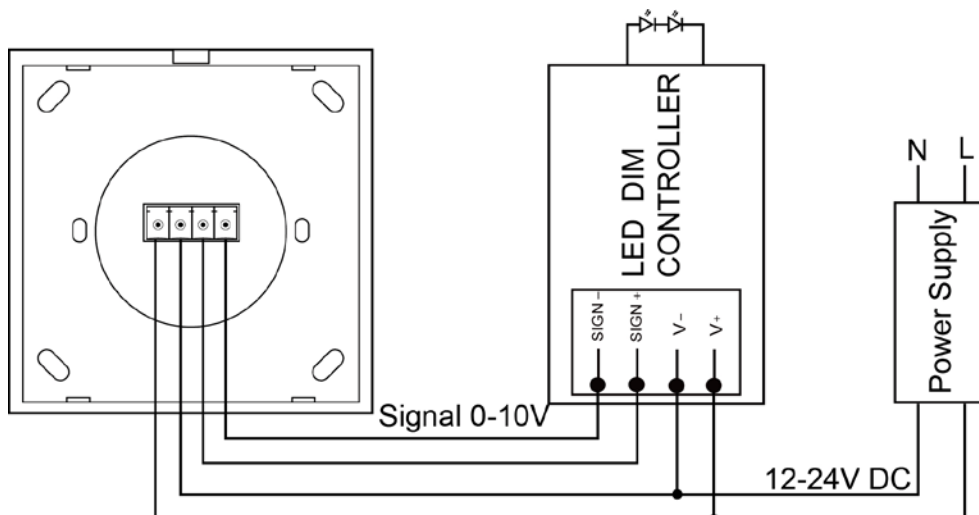
## Interface Introduction

1. Power Input: DC+
2. Power Input: DC-
3. Signal Output: 10V
4. Signal Output: 0V



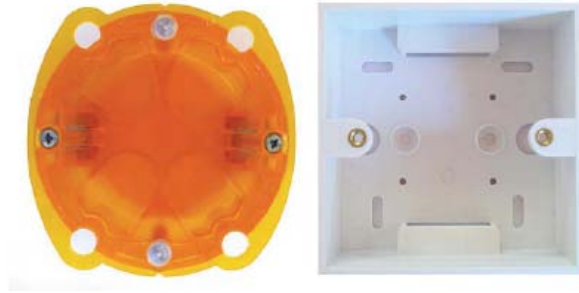
- ◆ Power input interface  
DC 12-24V input, supply power for the controller it takes.
- ◆ Signal output interface  
Signal 0-10V output can control LED 0-10V DIM controller.

## Typical Application

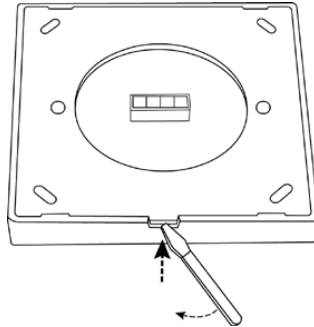


## Installation Guide

1. Mount an electrical box inside the wall.

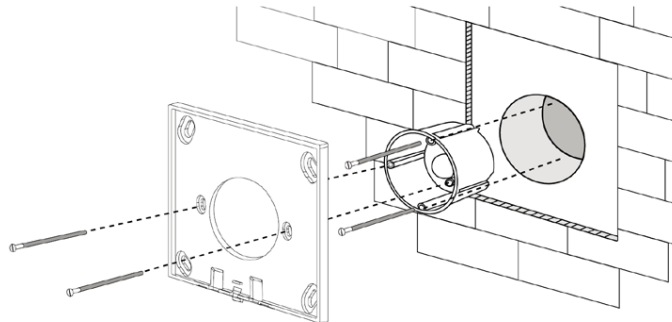


2. To separate the glass panel and the back cover of the controller with a screwdriver along the gap of the bottom box.

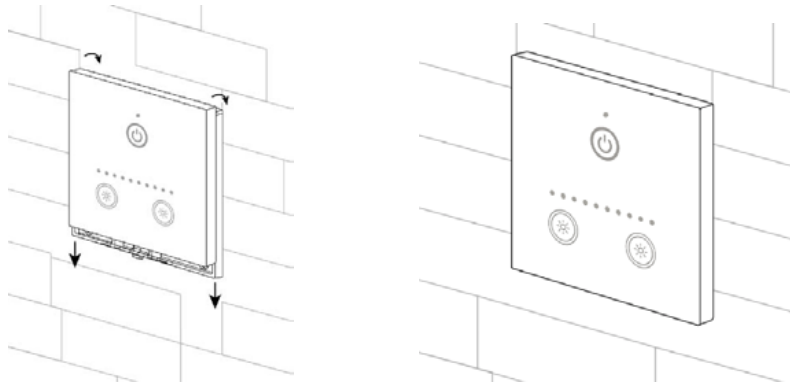


3. To connect the output and power wires to the corresponding input and output terminal blocks on the behind of glass panel.

4. To lock the back cover on the electrical box and fix it with the screwdriver.



5. To buckle the glass panel to the back cover.



### Remarks:

1. Connect the wire at first, following by the power wire; **Please ensure short circuit can't occur between connecting wire before you turn on the power.**
2. Power supply voltage range is DC12-24V, more than voltage range maybe will burnout the controller.