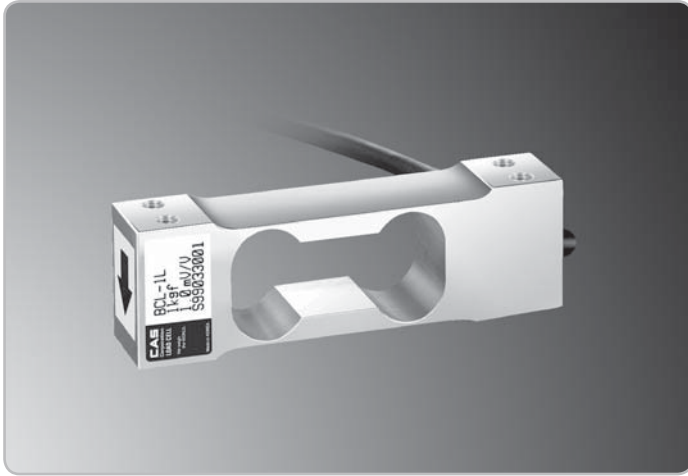


# BCL

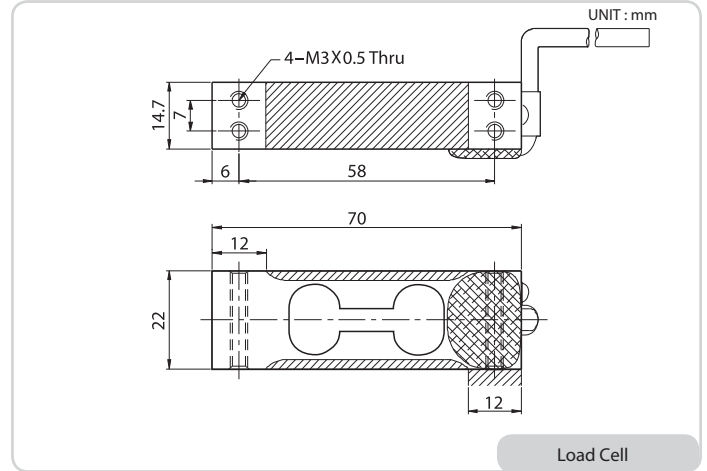
## Single Point Load Cell, 1kgf-3kgf



### LOAD CELL



### DIMENSION



### FEATURES

- Low cost
- Off center compensation
- Protection Class IP65

### SPECIFICATION

Max. Capacity (Rated Load)	kgf	1, 2, 3
Rated Output	mV/V	1.0 ± 0.1
Zero Balance	mV/V	0.0 ± 0.05
Accuracy Class	-	-
Non-Linearity	%R.O.	0.03
Hysteresis	%R.O.	0.03
Combined Error	%R.O.	0.03
Repeatability	%R.O.	0.01
Creep for 30min.	%R.O.	0.03
Return for 30min.	%R.O.	0.03
Resolution	-	≤ 1/3000
Division	mV/V	0.00033
Temperature Effect on	-	-
Zero Value	%/10	0.028
Output Value	%/10	0.014
Excitation	-	-
Recommended	V	10
Maximum	V	15
Resistance	-	-
Input	Ω	400 ± 20
Output	Ω	350 ± 3.5
Insulation	MΩ	>2000
Compensated Temperature Range		-10 to +40
Operating Temperature Range		-20 to +70
Material & Plate	-	Anodized Aluminum
Cable Specification	-	ø4 x 4p x 60cm (P.V.C)
Safety Overload	%R.L.	150%R.L.
Platform Size	mm	200 x 200