

Modelli/Models: IREV(M,S,Y,F,C)(0,7)(0,L,H,E,A)(N,R,C,B,A,M,L,T)(0,1,2,3,5)0
Modelli relè 16 A/Models relay 16 A: IREV(S,Y)(0,7)(E,A)(P,Q,S,U,V,X,Y,Z)(0,1,2,3,5)0

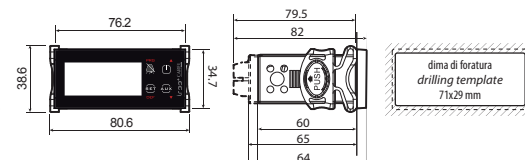
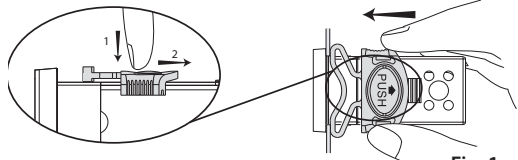


LEGGI E CONSERVA QUESTE ISTRUZIONI / READ AND SAVE THESE INSTRUCTIONS

NO POWER & SIGNAL CABLES TOGETHER / READ CAREFULLY IN THE TEXT!

Montaggio a pannello / Panel mounting

Dimensioni (mm) / Dimensions (mm)



Da dietro (con 2 staffe posteriori) / Rear (with 2 quick-fit side brackets)

Pulsanti sulla tastiera

Table with 4 columns: Tasto, Normale funzionamento, Start-up, Richiesta assegnazione autom. indirizzo. It details functions for buttons like PRG/MUTE, ON-OFF/UP, AUX/DOWN, and SET/DEF.

Buttons on the keypad

Table with 4 columns: Button, Normal function, Start-up, Automatic address assignment. It details functions for buttons like PRG/MUTE, ON-OFF/UP, AUX/DOWN, and SET/DEF.

Tabella allarmi e segnalazioni: display, buzzer e relè / Table of alarms and signals: display, buzzer and relay

Large table with 6 columns: Codice / Code, Icona sul display / Icon on the display, Relè allarme / Alarm relay, Buzzer, Ripristino / Reset, Descrizione / Description. Lists various alarm and signal codes and their corresponding actions.

NOTA: Il buzzer viene attivato se abilitato dal parametro 'H4'. / NOTE: The buzzer is enabled if enabled by the parameter 'H4'

Attenzione: separare quanto più possibile i cavi delle sonde e degli ingressi digitali dai cavi dei carichi induttivi... / WARNING: separate as much as possible the probe and digital input signal cables from the cables carrying inductive loads...

Descrizione / Description

ir33+* rappresenta una gamma di regolatori elettronici a microprocessore con visualizzazione a LED... ir33+* represent a range of electronic microprocessor controllers with LED display developed for the management of stand-alone refrigerating units.

Caratteristiche tecniche / Technical characteristics

Table with 4 columns: alimentazione / power supply, Isolamento garantito dall'alimentazione / Insulation guaranteed by the power supply, Ingressi / Inputs, and Tipo sonda / Probe type. Lists technical specifications for power, insulation, inputs, and probes.

Table with 4 columns: Uscite relè / Relay outputs, Uscite SSR / SSR Outputs, and Connessioni / Connections. Lists specifications for relay outputs, SSR outputs, and connections.

(*) Relè non adatti per carichi fluorescenti (neon, ...) che utilizzano starter (ballast) con condensatori di rifasamento... (*): Relay not suitable for fluorescent loads (neon lights, ...) that use starters (ballasts) with phase-shift capacitors.

Orologio / Clock: errore a 25°C ±10 ppm (±5,3 min/anno) / error at 25°C ±10 ppm (±5.3 min/year)
Temperatura di funzionamento / Operating temperature: -10T60 °C per tutte le versioni / -10T60 °C for all versions

Segnalazioni sul display

Table with 4 columns: Icona, Funzione, Normale funzionamento, Startup. Lists display signals and their corresponding functions and startup actions.

Signals on the display

Table with 4 columns: Icon, Function, Normal operation, Startup. Lists display signals and their corresponding functions and startup actions.

Smaltimento del prodotto / Product disposal

L'apparecchiatura (o il prodotto) deve essere oggetto di raccolta separata in conformità alle vigenti normative locali in materia di smaltimento.

