

Pressure switch MDR 21



- Single phase
- Switching capacity 2.2 kW / 3 HP
- Max. cut-out pressure 12 bar / 175 psi
- 2-pole (N.C.)
- Acc. to EN 60947
- UL / CSA-approval
- Flange = Die-cast aluminium

Order reference	Type code	ON / OFF Rotary knob	Pressure range P _{OFF} in bar	Flange	Weight (in g)	Part No.
MDR 21/6-EA	MDR-21 DBA AACA 015A030 XAA XXX	EA	1,5 - 7	G 1/4" Alu	300	212218
MDR 21/6-EA	MDR-21 DEA AACA 015A030 XAA XXX	EA	1,5 - 7	F4 1/4" Alu	320	212225
MDR 21/11-EA	MDR-21 GBA AACA 070A090 XAA XXX	EA	4 - 12	G 1/4" Alu	300	212232
MDR 21/11-EA	MDR-21 GEA AACA 070A090 XAA XXX	EA	4 - 12	F4 1/4" Alu	320	212249
MDR 21/6	MDR-21 DBA BACA 015A030 XAA XXX	-	1,5 - 7	G 1/4" Alu	300	219910
MDR 21/6	MDR-21 DEA BACA 015A030 XAA XXX	-	1,5 - 7	F4 1/4" Alu	320	226901
MDR 21/11	MDR-21 GBA BACA 070A090 XAA XXX	-	4 - 12	G 1/4" Alu	300	226918
MDR 21/11	MDR-21 GEA BACA 070A090 XAA XXX	-	4 - 12	G F4 1/4" Alu	320	226925

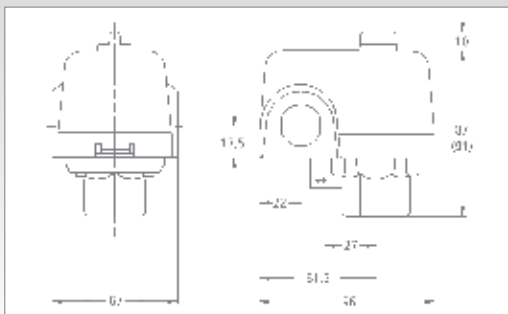
Unloader valves and cable glands for retrofitting, see accessories!

Technical Data MDR 21 nach EN 60947 UL/CSA	
Rated insulation voltage U _i	500 V
Motor switching capacity (UL 508, CSA 22.2) U _e =120 V (1~)	2 HP
Motor switching capacity (UL 508, CSA 22.2) U _e =240 V (1~)	3 HP
Motor switching capacity (AC 3) Cycles	2,2 kW
Electrical life (AC 3) Cycles	> 1 x 10 ⁵
Mechanical life Cycles	> 5 x 10 ⁶
Max. electrical cycles Cycles/h	120
Max. mechanical cycles Cycles/h	600
Rated operational current I _e (UL 508, CSA 22.2) at 240 V AC / 120 V AC	17 A / 24 A
Bursting strength P _z	> 35 bar

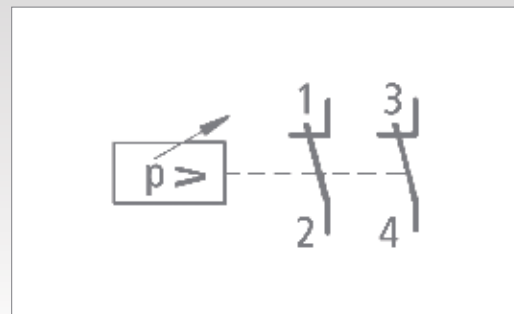
Technical Data MDR 21 nach EN 60947 UL/CSA	
Permissible medium temperature Air	- 5...+ 80 °C
Permissible medium temperature Water	+ 80 °C
Degree of Protection acc. to EN 60529	IP 44
Conductor cross-section 1 ... fine stranded cable 1 x / 2 x	2,5 / 2,5 mm ²
Conductor cross-section 1 ... rigid cable 1 x / 2 x	2,5 / 2,5 mm ²

Diaphragm media resistance MDR 21
A detailed overview of diaphragm media resistance for all pressure switches can be found on page 22. Please read the information carefully.

Dimensions / Circuit Diagrams MDR 21



Pressure switch MDR 21



Accessories MDR 21

Order reference	Description	Weight (in g)	Part No.
Unloader valves			
EV 2	With screw connection for 6 mm plastic or copper discharge tubes	25	200666
EV 2S*	With quick-connect for 6 mm plastic discharge tubes	25	200680
EV 2W	90° with screw connection for 6 mm plastic or discharge copper tubes	15	200697
EV 2Wi	90° with screw connection for 1/4" mm plastic or discharge copper tubes	15	200703
EV 2WS*	90° with quick-connect for 6 mm plastic discharge tubes	15	200710
Delayed unloader valves			
AEV 2	With screw connection for 6 mm plastic or copper discharge tubes	25	200727
AEV 2S*	With quick-connect for 6 mm plastic discharge tubes	25	200741
AEV 2W	90° with screw connection for 6 mm plastic or copper discharge tubes	15	200758
AEV 2Wi	90° with screw connection for 1/4" mm plastic or copper discharge tubes	15	200765
AEV 2WS*	90° with quick-connect for 6 mm plastic discharge tubes	15	200772
Cable glands			
WN	Grommet	6	201243
PG 13,5 Z-21	With strain relief	12	201021
PG 13,5 ZK-21	With strain relief and cable support	12	201038
Cover			
H 21 (Cover MDR 21)	Cover without On/Off lever (Neural version without marking)	40	229452
H 21-EA (Cover MDR 2+EA)	Cover with On/Off lever for manual On/Off (neutral version, without marking)	40	217503

* only for pneumatic tubes with outside tolerances according to e. g. Festo PAN 6x1mm

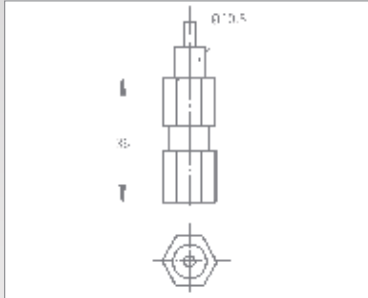
Unloader valves / Delayed unloader valves



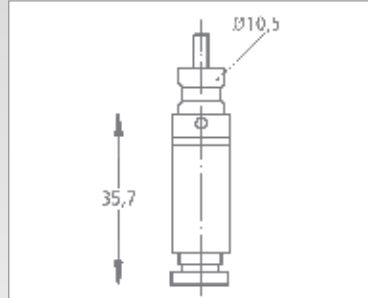
Cable glands MDR 21



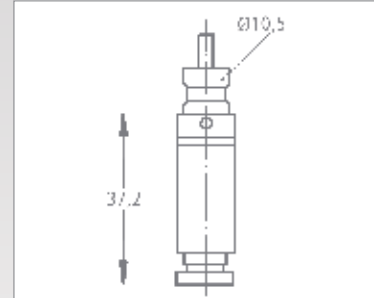
Dimensions, Accessories MDR 21



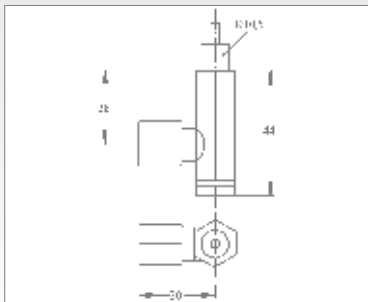
EV 2



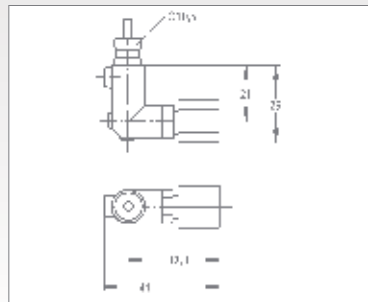
EV 2S



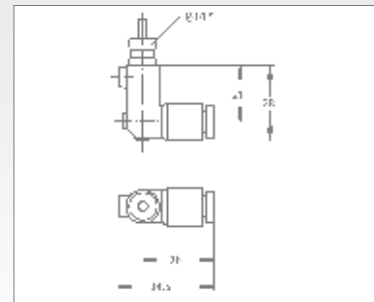
AEV 2S



AEV 2

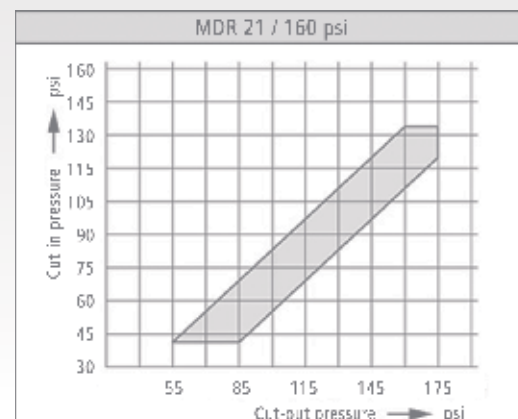
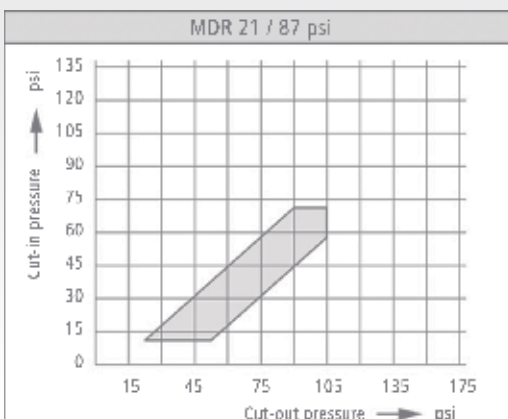
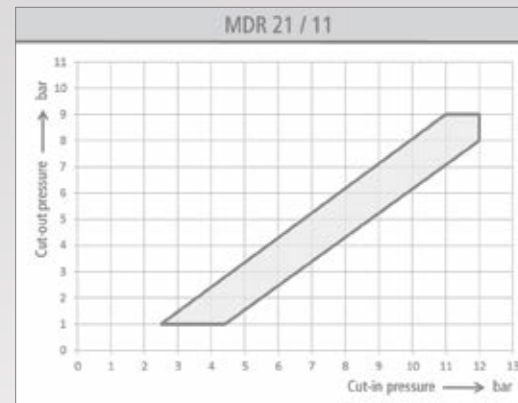
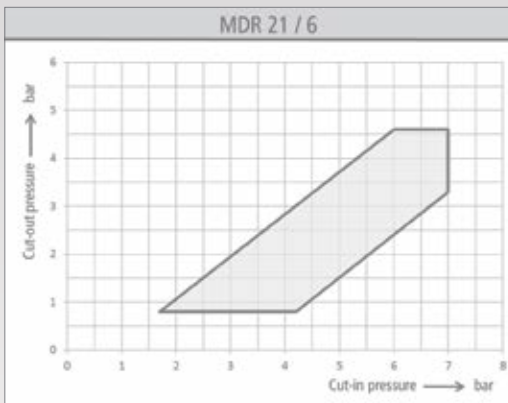


EV 2W / EV 2Wi
AEV 2W / AEV 2Wi



EV 2WS /
AEV 2WS

Pressure Diagrams



1 bar = 14,5 psi; 10 psi = ca. 0,7 bar