




**VM MOTORI** S.p.A.



Поставщик в Республике Беларусь, Частное предприятие "Движение Воды"  
Тел.: ♦ 8 (029) 183-85-06,  МТС 8 (033) 386-80-72

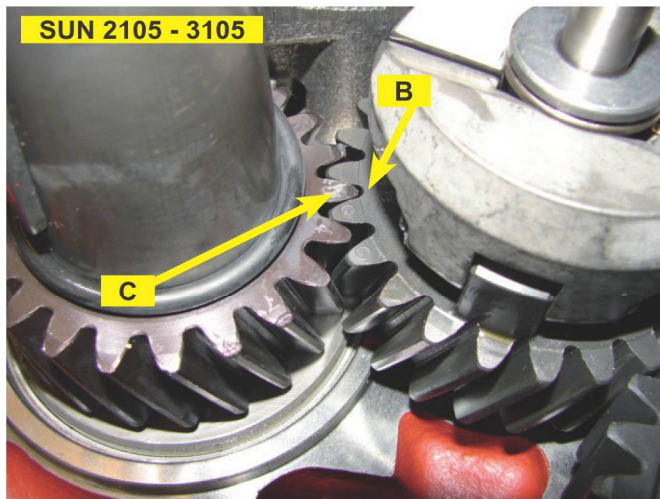
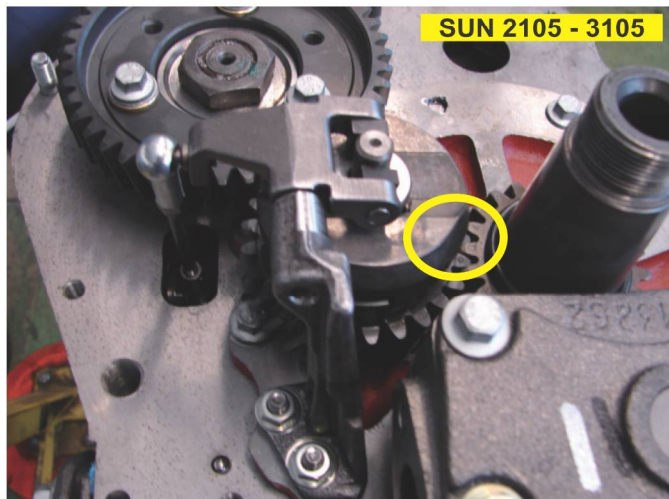
# SUN-E-E1-E2 series

FOREWORD	0
IDENTIFICATION	1
TECHNICAL SPECIFICATIONS	2
MAINTENANCE	3
SYSTEM DIAGRAMS	4
DISASSEMBLY	5
CHECKS AND REPAIRS	6
ASSEMBLY	7
TABLES	8
RUNNING TEST AND ADJUSTEMENTS	9
APPLICATIONS	10
SPECIAL TOOLS	11
LABOR TIME GUIDE	12

Edition 09/2007

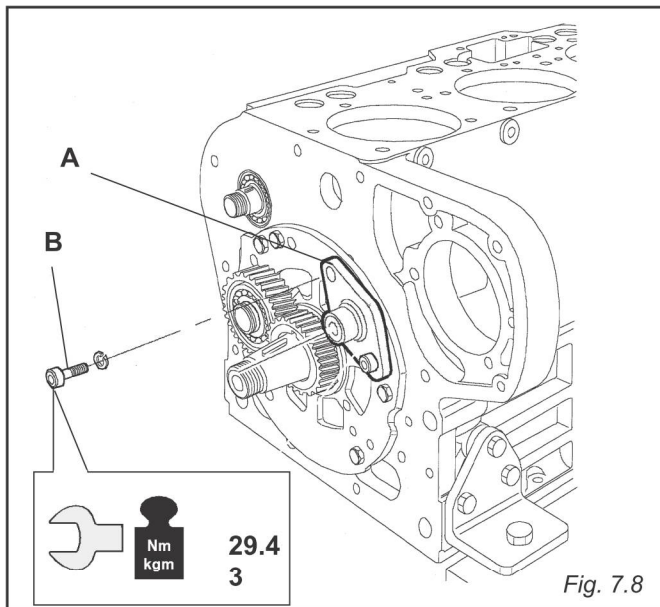
Tacche o Segni di riferimento - Notches or Reference marks

intermediate gear **B**  
crankshaft gear **C**



**7.6 INTERMEDIATE GEAR SUPPORT  
(INJECTION PUMP SIDE) (FIG. 7.8)**

Fit support **A**, insert screws **B** and torque to the value specified.



**7.11 PISTON TO CONNECTING ROD (FIG. 7.17)**

Turn the engine through 180° so that the cylinder head mating surface is facing upwards.

Fit the circlip on the unmarked side **C** of piston **A**.

Fit piston **A** over connecting rod **B** with the arrow stamped on the piston crown facing towards the flywheel side. If the arrow is not present the combustion chamber recess "N" must be pointed toward injection side and the stamped numbers on connecting rod must be aligned in the same direction of combustion chamber recess.

Fit the second circlip on the gudgeon pin and check that the piston is free to rotate on the pin.

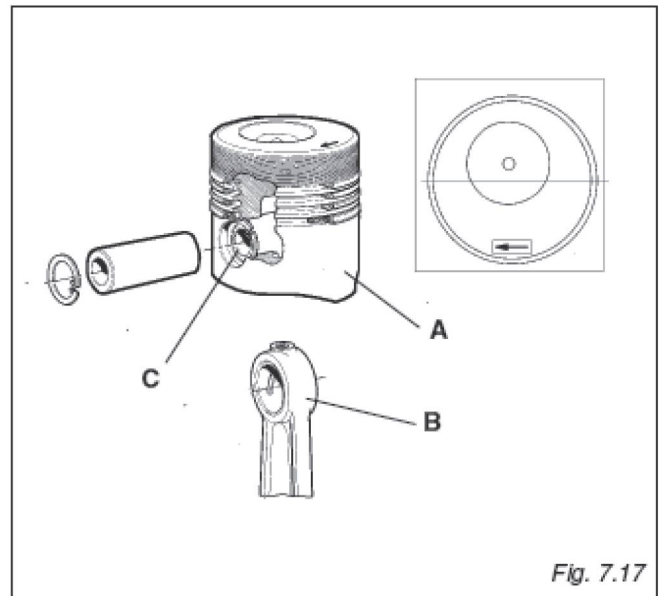


Fig. 7.17

**7.12 CONNECTING RODS (FIG. 7.13)**

**THE CONNECTING RODS ARE DIVIDED INTO WEIGHT CLASSES IDENTIFIED BY MARKINGS. ENSURE THAT ALL THE CONNECTING RODS FITTED HAVE THE SAME MARKING.**

Fit bearing **A** into the seat on connecting rod **B** and lubricate with engine oil. Insert fixing screws **D** in connecting rod **B**. Fit the connecting rod to the crankshaft with the stamped number facing the camshaft, injection side.

Fit bearing **A** to the connecting rod cap. Lubricate with engine oil and place it over the previously inserted screws, ensuring the stamped number on con rod cap **X** is aligned with the number on the connecting rod shaft **Y**.

Fit nuts **C** with the machined surface facing the connecting rod cap.

Torque the nuts to the value specified.

Check axial play and ensure that the connecting rod is free to rotate without sticking or undue stiffness.

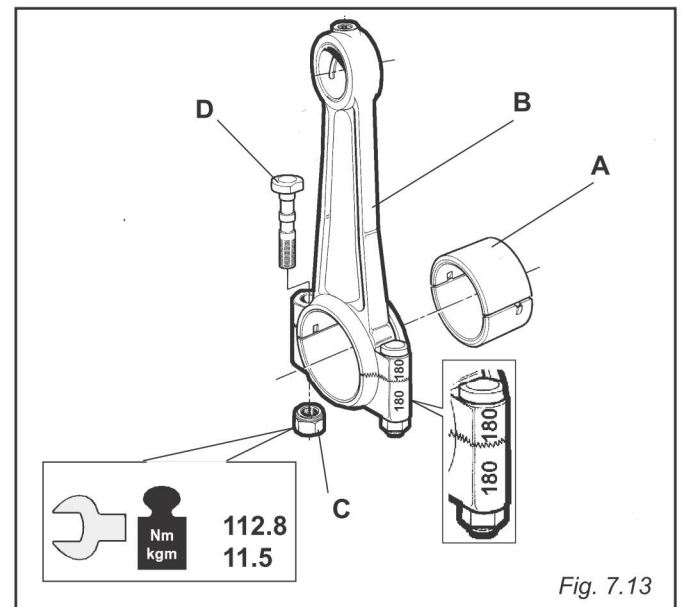
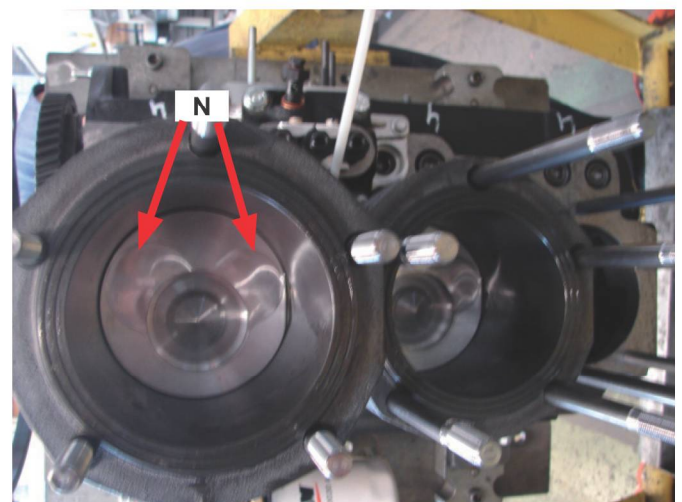
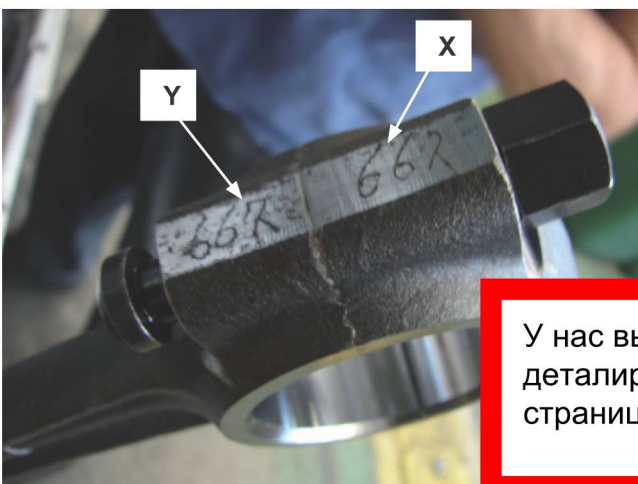


Fig. 7.13



У нас вы можете заказать полный каталог деталей двигателя, звоните, телефон сверху страницы