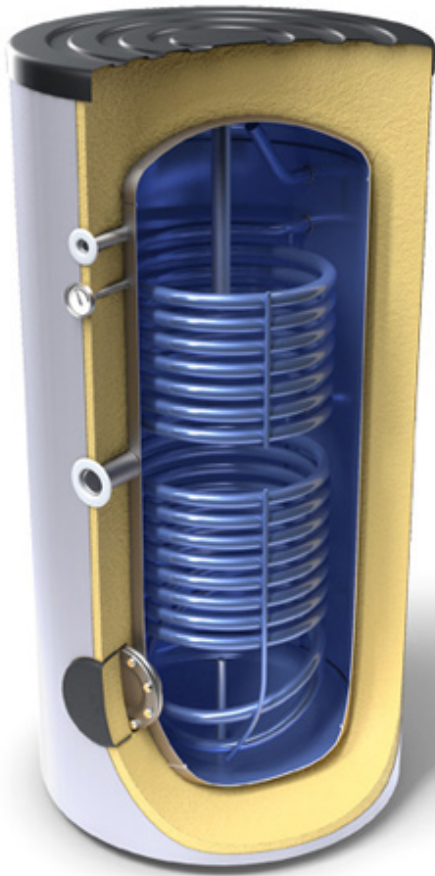




STORAGE TANKS FOR DOMESTIC HOT WATER ENERGY  
EFFICIENCY CLASS A WITH TWO HEAT EXCHANGERS

EV 7/5 S2 200 65 A



Capacity	200 L
Energy efficiency class	A
Diameter	650 mm
Maximum operational temperature	95 °C
Thermo pocket	1 pieces
Insulation (rigid PU)	75 mm
Continuous flow rate of DHW at $\Delta T$ 35°C (S1) *60-80/70-90°C	558/648 L/h
Exchanged power in continuous mode (max coil output) S2 *60-80 / 70-90°C	13/20 kW
Heat losses $\Delta T$ 45K	1.05 kWh/24h



Rated pressure of the water tank	8 bar
Heat exchanger capacity S2	3.3 L
Continuous flow rate of DHW at $\Delta T$ 35°C (S2) *60-80 / 70-90°C	318/468 L/h
Height	1274 mm
Minimum height of the premise	1345 mm
NL factor S1	4.3
NL factor S2	1
Minimum time of heating S2 *80°C-**15/60°C	39
Net weight	73 kg
Exchanged power in continuous mode (max coil output) S1 *60-80/70-90°C	23/30 kW
Maximum quantity of drawn o $\ddot{u}$ water MIX 45°C (**15-60°C), Power input cut o $\ddot{u}$ (S1)	225 L
Heat exchanger capacity S1	4.6 L
Rated pressure of the heat exchanger	6 bar
Minimum time of heating S1 *80°C-**15/60°C	39
Maximum quantity of drawn o $\ddot{u}$ water MIX 45°C (**15-60°C), Power input cut o $\ddot{u}$ (S2)	111 L
Heat exchanger surface S1	0.75
Heat exchanger surface S2	0.54



## Information

Storage tanks for domestic hot water energy efficiency  
Class A with two heat exchangers

EV 7/5 S2 200  
65 A

- Increased efficiency of the insulation from hard PU
- Energy Efficiency class A in accordance with EU Directive ErP 2010/30/EU.
- High-quality enamel coating ensuring long operating life
- Effective anode protection
- Service flange for easy inspection and cleaning of the device
- Option for installation of an electric heating element
- Option for installation of a thermal regulator
- Option for installation of a thermal sensor

## Serie information

Storage tanks for domestic hot water energy  
efficiency Class A with two heat exchangers

EV 7/5 S2  
200 65 A

The range includes models with volumes of 200 and 300 liters. Suitable to supply with domestic hot water single and multi-family households. These models provide option for connection to two additional heat sources (solar thermal system, gas boiler and solid-fuel boiler)