



E8-1212 Standard – 97 000\$
E8-1224 Standard – 101 000\$

Доставка, Обучение, Гарантия

Standard configurations

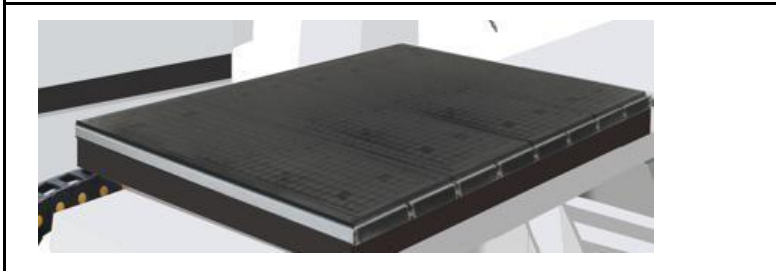
Model	E8-1212	E8-1224
Traveling size	1720*1820*750m m	1720*3040*750m m
Working size	1220*1220*500m m	1220*2440*500m m
Table size	1230*1220mm	1230*2440mm
Transmission	X/Y rack and pinion drive, Z ball screw drive	
Table	Single -layer T-slot vacuum tables	
Vacuum pump	Germany Becker KVT3.140 Pump 4KW	
Spindle	10KW Hiteco spindle made in Italy	
Traveling speed	60/60/20m/min	
Working speed	20m/min	
Tool magazine	8 slots carousel with stepper motor	
Software	not included	
Driving system	Japan YASKAWA servo system	
Cable	Germany Igus cables	
A/C axis	A: $\pm 185^\circ$, C : $\pm 320^\circ$	
Controller	OSAI made in Italy with Dell Win 10	
Tool holder	8 pieces of tool holders HSK ER32	
Voltage	3P 415V 50HZ	
Air compressure	Included	

◆ An entry-level five-axis machining center with world top-class controller-designed for the most demanding processing requirements, featuring maximum precision, and all-round excellence.

◆ CNC machining center with 5 synchronizing interpolated axes; Real-Time Tool Center Point Rotation (RTCP), well suited for 3D processing.



Italy 10KW Hiteco spindle head ,
High accuracy



Single -layer T-slot vacuum tables



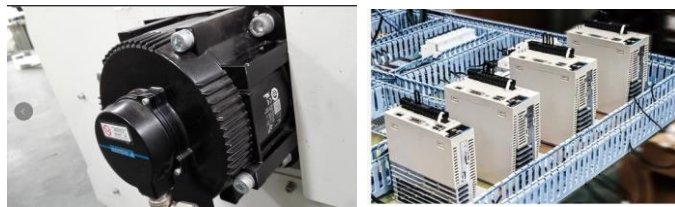
Italy OSAI controller , powerfully and friendly in operation
Win 10 Dell computer



Smart carousel with 8 slots and stepper motor



Helical rack with smooth and quiet running



Japan YASKAWA Servo motor&driver and Shimpo reducer



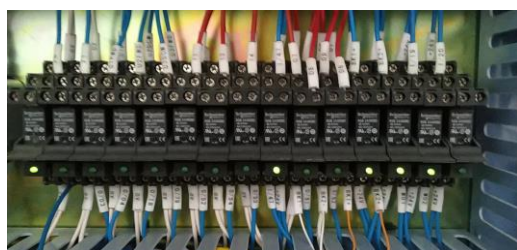
Heavy load plugs enable easy installation and maintenance



Japanese THK Linear guide rail Auto lubrication system



Flexible Germany Igus cables



French Schneider or SIMENS Relay and button



Germany brand Becker pump kvv 3.140 with 4KW



Test bar for RTCP testing from Germany before shipment
UK Laser interferometer accuracy testing before shipment

Фото Завода



In-house Machining Center Facility



Thank you for trust in EquiTechno and Maxicam!