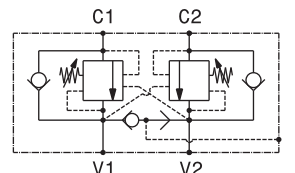
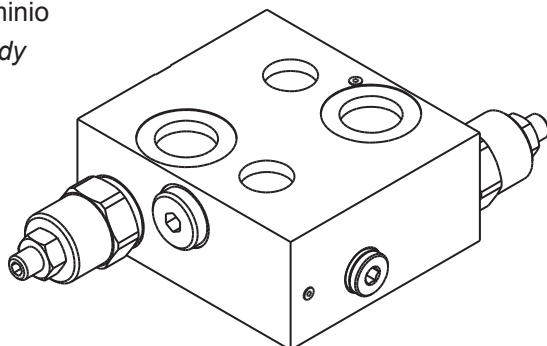


Valvola OVERCENTER doppio effetto con sblocco freno flangiabile su motori DANFOSS-OMS-OMSW-OMSS
 Double effect OVERCENTER valve with brake unclamping, flangeable to DANFOSS OMS-OMSW-OMSS motors

mod. OVC-DE-FMD-SF-121

Corpo in alluminio

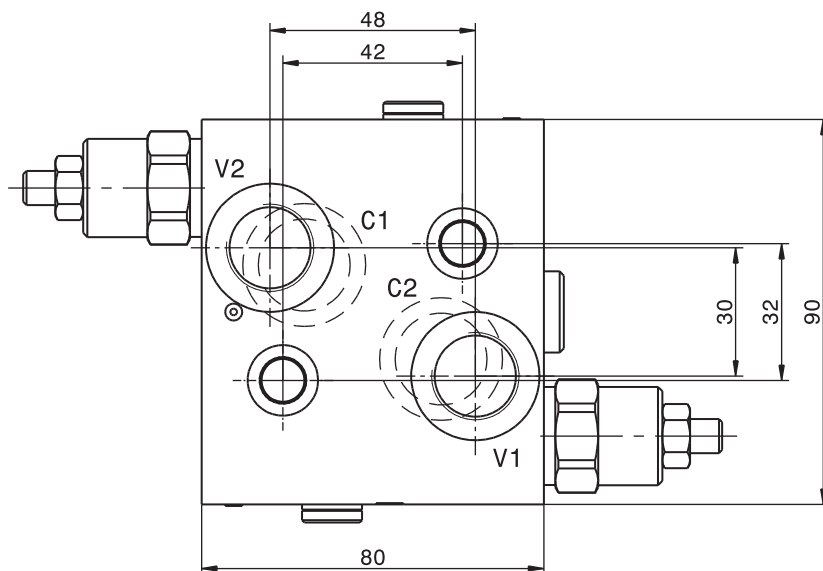
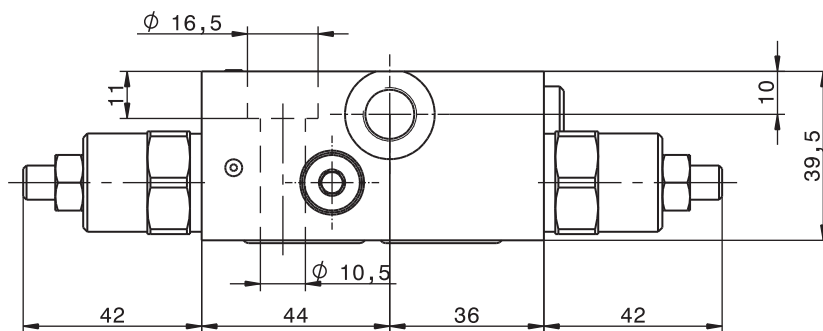
Aluminium body



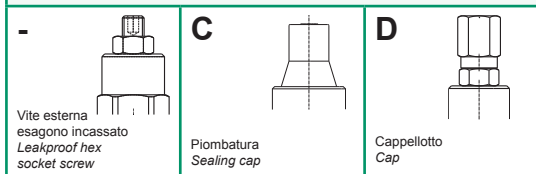
| | |
|--|---------------------|
| Portata massima Max flow | 60 l/min 16 gpm |
| Pressione massima Max pressure | 350 bar 5000 psi |
| Rapporto di pilotaggio standard Standard pilot ratio | 4,25:1 |
| Rapporto di pilotaggio a richiesta Pilot ratio upon request | 3:1 8:1 10:1 |

Taratura Setting
 La valvola deve essere tarata almeno 1.3 volte la massima pressione indotta dal carico
 The valve must be set at least 1.3 times maximum load induced pressure

| Codice Code | Taratura standard Standard setting (Q=5 l/min) | Campo di taratura Adj. Pressure range | Colore molla Spring color |
|-------------|--|--|------------------------------|
| 01 | 100 bar 1450 psi | 20+200 bar 290+2900 psi | Bianco White |
| 02 | 280 bar 4000 psi | 50+350 bar 725+5000 psi | Nero Black |



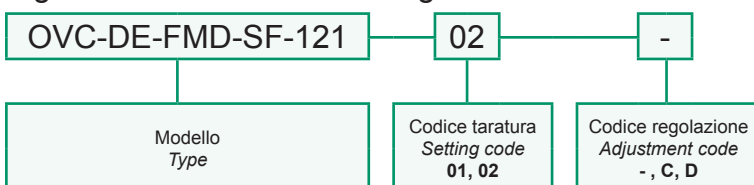
Regolazioni Adjustments



Dati e tarature ottenuti usando olio con viscosità 30 cSt a 50°C
 Performances and calibrations are carried out by using hydraulic oil with 30 cSt viscosity at 50°C

| | |
|--|--------------|
| Viscosità consigliate Recommended viscosity | 10 ÷ 420 cSt |
| Temperature di lavoro Working temperature | -20 ÷ +90 °C |
| Filtrazione assoluta Absolute filtration | 25 µ |

Sigla di ordinazione / Ordering code



I dati non sono impegnativi, CBF si riserva di apportare modifiche senza preavviso.
 The specifications are not binding, CBF reserves the right to introduce modifications without notice.