

309495F

## Inline HD™ Texture Gun

EN

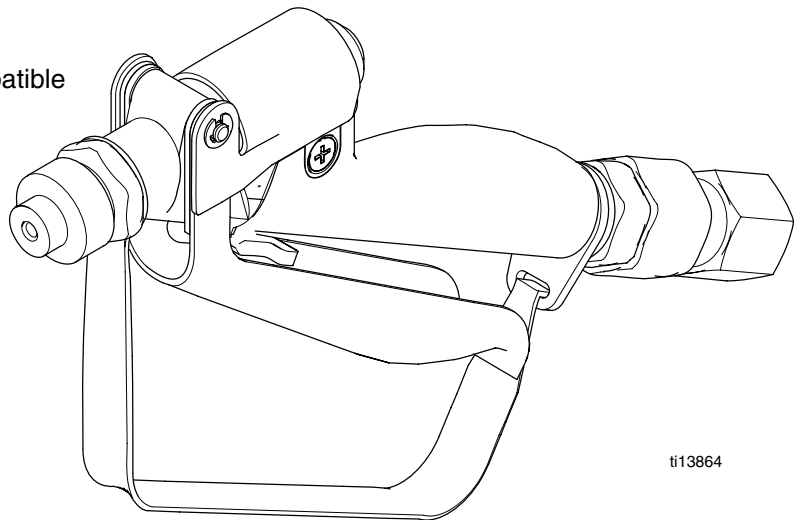
### Waterbase Compatible

*280 bar (28 MPa, 4000 psi) Maximum Working Pressure*

### Model 245820, Series C

Ball end valve needle – abrasive material compatible

U.S. Patent No. Des. 342,654



ti13864



### Important Safety Instructions

Read all warnings and instructions in this manual.  
Save these instructions.

## Table of Contents

Warning .....	2
Operation .....	3
Service .....	5
Parts .....	10
Technical Data .....	11
Graco Warranty .....	12
Graco Phone Number .....	12



## ⚠ WARNING

**Fire and explosion hazard:** Solvent and paint fumes can ignite or explode.

**To help prevent a fire and explosion:**

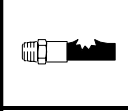
- Use only in an extremely well ventilated area.
- Eliminate all ignition sources; such as pilot lights, cigarettes and plastic drop cloths (static arc hazard). Do not plug or unplug power cords or turn lights on or off in spray area.
- Ground Sprayer, object being sprayed, paint and solvent pails.
- Hold gun firmly to side of grounded pail when triggering into pail.
- Use only conductive airless paint hose.
- Do not use 1,1,1-trichloroethane, methylene chloride, other halogenated hydrocarbon solvents or fluids containing such solvents in pressurized aluminum equipment. Such use could result in a chemical reaction, with the possibility of explosion.
- Do not fill fuel tank while engine is running or hot.
- Do not flush with gasoline.

**Skin injection and high pressure hazard:** High pressure spray or leaks can inject fluid into the body.

**To help prevent injection, always:**

- Engage trigger safety latch when not spraying.
- Keep clear of nozzle and leaks.
- Never spray without a tip guard.
- Do **PRESSURE RELIEF** if you stop spraying or begin servicing sprayer.
- Do not use components rated less than sprayer *Maximum Working Pressure*.
- Never allow children to use this unit.

If high pressure fluid pierces your skin, the injury might look like "just a cut". But it is a serious wound! **Get immediate surgical treatment.**



## ⚠ ADVERTÊNCIA

**Perigo de incêndio e explosão:** os solventes e os vapores da pintura poderão explodir ou incendiar.

**Para ajudar a evitar incêndio e explosão:**

- **Utilize unicamente em áreas extremamente bem ventiladas.**
- Elimine todas as fontes de ignição, tais como luzes piloto, cigarros e arcos de estática resultantes dos plásticos de proteção. Não ligue nem desligue os cabos de alimentação ou as luzes numa área de pulverização.
- Ponha em contato com a terra o pulverizador, o objeto a ser pulverizado, e os baldes de tinta e de solventes.
- Segure a pistola firmemente de encontro ao lado do balde em contato com a terra, quando estiver descarregando para dentro do mesmo.
- Utilize somente tubos flexíveis condutores para pintura a alta pressão.
- Não utilize 1,1,1-tricloroetano, cloreto de metileno, outros solventes de hidrocarbonetos halogenados ou líquidos contendo tais solventes em equipamento de alumínio pressurizado. Tal utilização poderá resultar numa reação química, com possibilidade de explosão.
- Nunca abasteça o depósito de combustível com o motor em funcionamento ou quente.
- Não faça a descarga com gasolina.

**Perigo de injeção de líquidos à alta pressão:** a pulverização ou vazamentos à alta pressão podem injetar líquido no corpo.

**Para ajudar a evitar injeção de líquido, faça sempre o seguinte:**

- Engate o trinco de segurança do gatilho quando não estiver pulverizando.
- Mantenha-se afastado dos bocais e locais onde há vazamentos.
- Nunca pulverize sem que haja uma proteção na extremidade.
- **ALIVIE A PRESSÃO** quando parar de pulverizar e antes de iniciar a manutenção do pulverizador.
- Não utilize componentes com uma classificação inferior à do pulverizador *Pressão Máxima de Trabalho*.
- Nunca permita que crianças utilizem esta unidade.

Se o líquido a alta pressão penetrar na sua pele, o ferimento poderá parecer "simplesmente um corte". Mas é um ferimento grave! **Faça tratamento cirúrgico imediatamente.**

## ⚠ MISE EN GARDE

**Danger d'incendie et d'explosion :** les gaz de solvant et de peinture peuvent s'enflammer ou exploser.

**Pour éviter les risques d'incendie et d'explosion :**

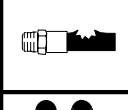
- **N'utiliser l'appareil que dans une zone extrêmement bien aérée.**
- Éliminer toute source d'inflammation ; telle que veilleuses, cigarettes et arcs d'électricité statique créés par les toiles de peintre en plastique. Ne pas brancher et débrancher de cordons électriques, ou allumer et éteindre des lumières dans la zone de pulvérisation.
- Mettre à la terre le pulvérisateur, l'objet à pulvériser ainsi que les seaux de peinture et de solvants.
- Tenir le pistolet fermement contre la paroi d'un seau mis à la terre lorsqu'on pulvérise dans le seau.
- N'utiliser qu'un flexible pour peinture pulvérisée sans air.
- Ne jamais utiliser de trichloroéthane 1,1,1, de chlorure de méthylène, d'autres solvants à base d'hydrocarbures halogénés, ni de produits contenant de tels solvants dans un équipement sous pression en aluminium. Cela pourrait provoquer une réaction chimique avec risque d'explosion.
- Ne jamais remplir le réservoir d'essence lorsque le moteur est chaud ou en marche.
- Ne pas rincer avec de l'essence.

**Dangers d'injection cutanée et haute pression :** la pulvérisation sous haute pression ou les fuites peuvent injecter des fluides dans le corps.

**Pour éviter les risques d'injection, toujours :**

- Bloquer le loquet de sécurité de la gâchette à la fin de la pulvérisation.
- Se tenir loin de la buse et des fuites.
- Ne jamais pulvériser sans anti-gouttes.
- **DÉCHARGER LA PRESSÃO** à la fin de la pulvérisation ou avant de réparer le pulvérisateur.
- Ne pas utiliser de composants dont la pression nominale est inférieure à la *pression maximale de service du système*.
- Ne jamais permettre aux enfants d'utiliser cet appareil.

Si un fluide haute pression perce la peau, la blessure peut paraître une "simple coupure" Mais il s'agit bien d'une lésion grave! Consulter immédiatement un médecin en vue d'une intervention chirurgicale.



## ⚠ ADVERTENCIA

**Perigo de incendio o explosión:** Los gases de los disolventes y de la pintura pueden inflamarse o provocar una explosión.

**Para prevenir incendios y explosiones:**

- **Use únicamente en un área muy bien ventilada.**
- Suprima todas las fuentes de ignición; como luces piloto, cigarrillos y arcos estáticos de carpetas plásticas para protección contra pintura. No enchufe ni desenchufe cables de alimentación ni apague ni encienda las luces en un área de pulverización.
- Ponga a tierra el pulverizador, el objeto que recibe el chorro pulverizado, las cubetas de pintura y disolvente.
- Sostenga firmemente la pistola a un lado de la cubeta puesta a tierra cuando dispere dentro de ella.
- Use solamente mangueras para pintura conductora sin aire.
- No utilice nunca tricloroetano-1,1,1, cloruro de metileno ni otros disolventes a base de hidrocarburos halógenos o fluidos que contengan dichos disolventes en un equipo a presión de aluminio. El uso de estas sustancias puede provocar una intensa reacción química, con riesgos de explosión.
- Nunca llene el estanque de combustible mientras el motor esté en marcha o caliente.
- No lave con gasolina.

**Perigo de inyección a través de la piel y alta presión:** por la pulverización o las filtraciones a alta presión se pueden inyectar fluidos en el organismo.

**Para prevenir la inyección en la piel, siempre:**

- Enganche el seguro del gatillo cuando no use el pulverizador.
- No se acerque a la boquilla ni a las filtraciones.
- Nunca aplique fluido pulverizado sin un guardaboquilla.
- Realice el **ALIVIO DE PRESSÃO** si deja de pulverizar fluido o repara el pulverizador.
- No use componentes de capacidad nominal inferior a la *presión máxima de operación del pulverizador*.
- No permita que niños usen esta unidad.

Si fluido de alta presión le penetra la piel, la lesión podría parecer "sólo un corte". ¡Es una lesión seria! Consulte de inmediato al médico.

# Operation

## Pressure Relief Procedure

**! WARNING**

**INJECTION HAZARD**  
System pressure must be manually relieved to prevent system from starting or spraying accidentally. Fluid under high pressure can be injected through skin and cause serious injury. To reduce risk of injury from injection, splashing fluid, or moving parts, follow **Pressure Relief Procedure** whenever you:

- are instructed to relieve pressure,
- stop spraying,
- check or service any system equipment,
- or install or clean spray tip.

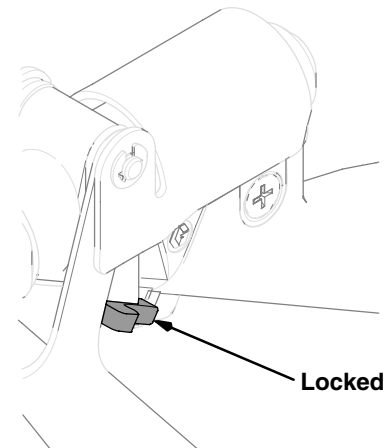
1. Lock gun safety latch.
2. Turn ON/OFF switch to OFF and pressure control knob to zero.
3. Unplug power supply cord.
4. Unlock gun safety latch. Hold metal part of gun firmly to grounded metal pail. Trigger gun to relieve pressure.
5. Lock gun safety latch.
6. Open pressure drain valve. Leave pressure drain valve open until ready to spray again.

*If suspected that spray tip or hose is completely clogged, or that pressure has not been fully relieved after following steps above, VERY SLOWLY loosen tip guard retaining nut or hose end coupling to relieve pressure gradually, then loosen completely. Now clear tip or hose obstruction.*

## Gun Trigger Safety

1. To lock gun safety, release trigger and rotate safety toward trigger, Fig. 1.

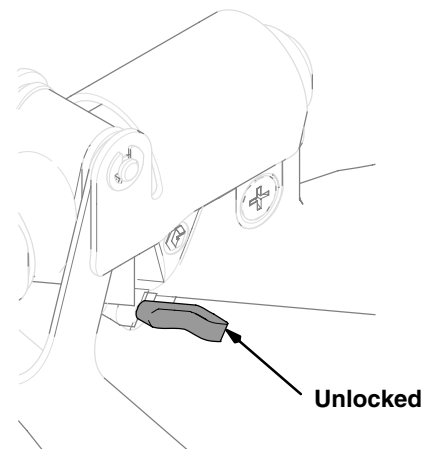
**NOTE:** Do not force trigger valve open with safety engaged. This could result in component failure.



**Fig. 1**

ti13865a

2. To unlock trigger safety, rotate safety toward handle, Fig. 2.




**Fig. 2**

ti13866a

# Operation

## Spraying

1.  Relieve pressure; page 3.
2. Lock gun trigger safety.
3. Install tip and guard.
4. Use lowest possible pump pressure to obtain desired flow rate.
5. Unlock gun trigger safety.
6. Squeeze trigger. Fluid flow begins with slightest pressure on trigger and stops when trigger is released.
7. Fig. 3. Periodically inspect gun handle vent for fluid buildup which could indicate an internal leak. Service fluid tube and o-ring as needed.

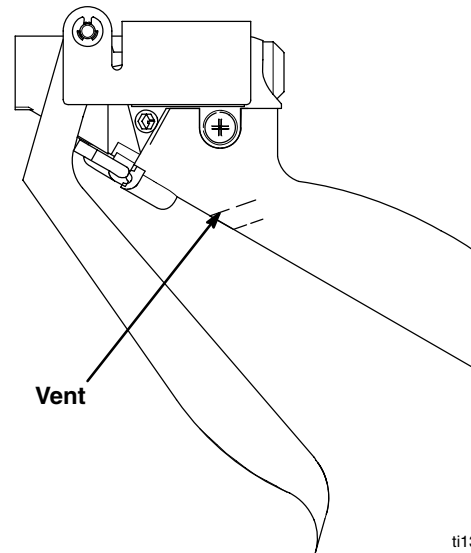


Fig. 3

ti13867a

## Flushing Safety

### **WARNING**



#### **FIRE AND EXPLOSION HAZARD**

To reduce risk of a fire, explosion, or serious injury,



Use lowest possible fluid pressure and maintain firm metal-to-metal contact between gun and grounded metal pail during flushing.

# Service

## WARNING



### INJECTION HAZARD

To reduce risk of a serious injury, including fluid injection,



- After adjusting or servicing gun, make sure fluid does not flow when trigger safety is locked. If fluid does flow, gun is not assembled properly or trigger safety is damaged. Reassemble gun or return it to your nearest Graco distributor. Do not use gun until problem is corrected.
- Fig. 6. When removing gun from hose, hold hex end of fluid tube assembly (19) securely to avoid loosening fluid tube from gun body.

1.   Relieve pressure; page 3.



2. Fig. 4. If fluid continues to flow after trigger is released, gun valve may need adjustment, be obstructed or damaged, or valve stem (24), seat (26), or seal (3) may be worn or damaged.
  - a. Adjust valve or spring tension as instructed on page 5.
  - b. Replace valve seal, stem, or seat as instructed on page 6.
  - c. To inspect valve for obstruction or damage, disassemble gun as instructed on page 7. Clean and inspect parts. Replace any worn or damaged parts and assemble gun as instructed on page 7.
3. Follow torque, sealant and lubrication notes.

## Adjusting Valve

Trigger travel and valve opening is factory set to 1 in. (25.4 mm). Use following procedure to adjust setting,

1.   Relieve pressure; page 3.
2. Disconnect gun from hose.
3. Fig. 4. Loosen stem nut (1) and spring housing (28).
4. Insert a 1/8 hex allen wrench through hole in spring adjustment screw (21) and into spring housing (28).
5. Turn spring housing (28) and stem nut (1) to change trigger travel and size of valve opening.
6. Tighten stem nut (1) to set adjustment.
7. Adjust spring adjustment screw (21) to desired trigger pull force.

## Adjusting Spring Tension


1.   Relieve pressure; page 3.
2. Disconnect gun from hose.
3. Fig. 4. Turn spring adjustment screw (21) as needed until spring force is adjusted to close valve.

# Service

## Valve Stem and Seal Service

If fluid leaks past v-block seal (3), v-block seal or valve stem (24) may be worn or damaged. Use following procedure to replace v-block seal or valve stem.



1.  Relieve pressure; page 3.
2. Disconnect gun from hose.
3. Fig. 4. Unscrew spring retainer (21) and remove spring (4).
4. Unscrew spring housing (28) with a 1/8 inch hex allen wrench.
5. Unscrew valve seat (35).
6. Remove adjustment bracket (20) and stem nut (1) from stem.
7. Remove valve stem (24).
8. Remove seal retainer (27) and v-block seal (3). Replace v-block seal.
9. Secure gun body (17) in an assembly fixture.
10. Lubricate and install v-block seal (3) into gun body (17) with lips of seal facing into housing.

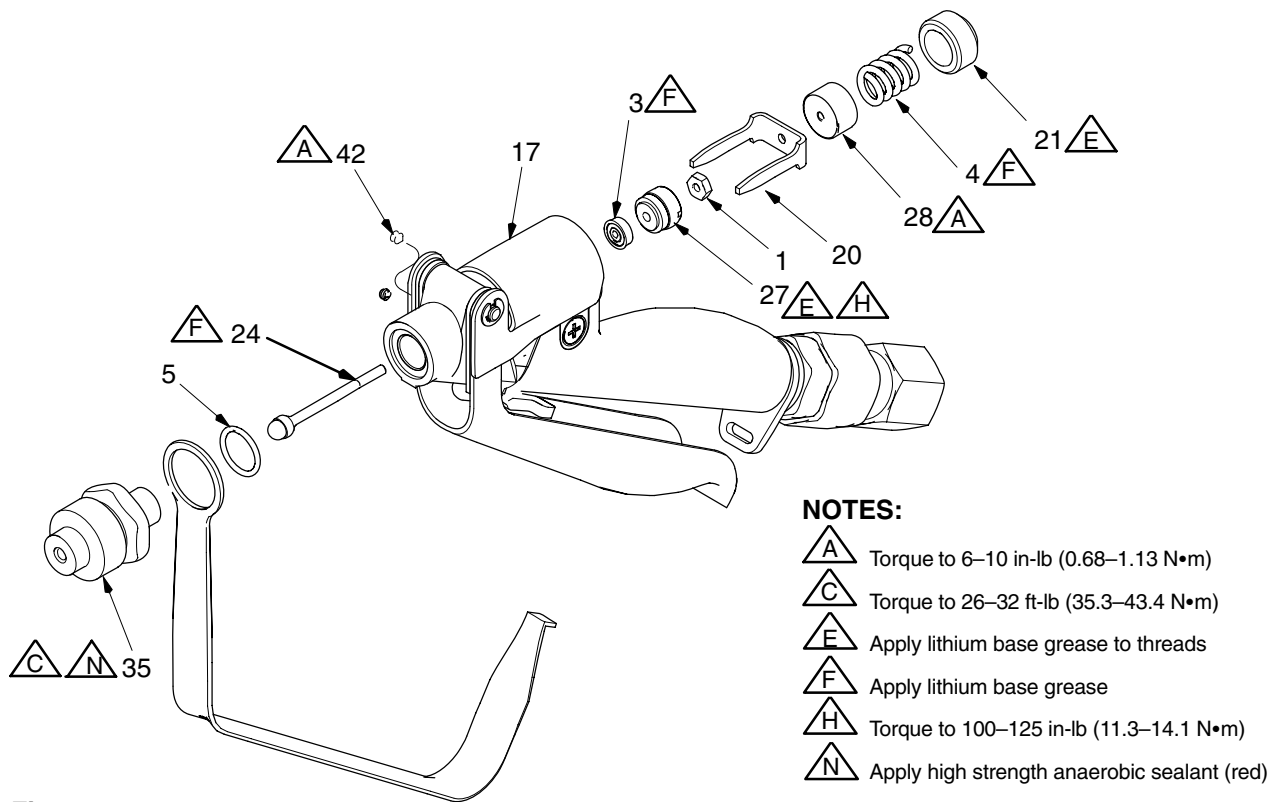
11. Lubricate and torque seal retainer (27) into gun body (17) to 100–125 in-lb (11.3–14.1 N•m).

### CAUTION

Installing valve stem (24) without turning it clockwise could damage v-block seal and result in fluid leakage.

12. Lubricate and install valve stem threads (24) into gun body (17). Thread stem assembly through v-block seal (3).
13. Thread nut (1) all way onto valve stem (24).
14. Install adjustment bracket (20) and spring housing (28) onto valve stem (24).
15. Apply high strength anaerobic sealant (red) to threads on valve seat (35). Torque valve seat into gun body (17) to 26–32 ft-lb (35.3–43.4 N•m).
16. Lubricate and install spring (4) and spring retainer threads (21) in gun body (17).
17. Insert a 1/8 inch hex allen wrench through spring retainer (21) and into spring housing (28). Adjust trigger travel and valve opening to desired position.
18. Tighten stem nut (1) to set adjustment.
19. Adjust spring adjustment screw (21) to desired trigger pull force.

# Service




ti13868a

Fig. 4

## Gun Disassembly and Assembly

### Disassembly

1.  Relieve pressure; page 3.
2. Follow steps 1 to 7 under **Valve Stem and Seal Service**.
3. Fig. 6. Remove two retaining rings (8), rod (13) and trigger (29).

4. Unscrew setscrew (42), then unscrew fluid tube assembly (19) from gun body (17).

### CAUTION

To avoid loosening connections and damaging gun, grip gun body (17), not handle (14), when removing fluid tube assembly (19).

5. Remove gun handle screws (9), gun handle (14), trigger lock (15), ball (2) and spring (7).
6. Remove seal retainer (27), seal (3) and o-rings (5 and 6).

# Service

## Gun Disassembly and Assembly (continued)

### Assembly

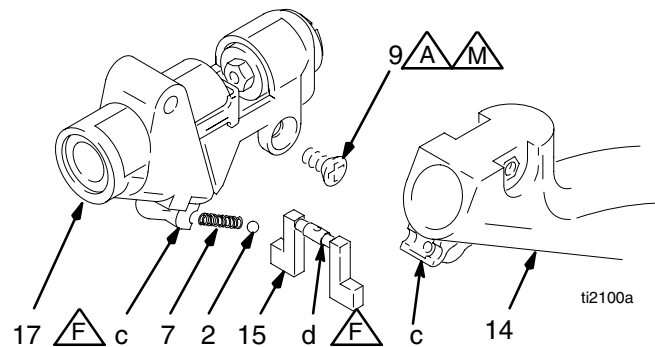
1. Follow steps 9 to 11 on page 6.
2. Lubricate o-ring (6) and install into gun body.
3. Follow steps 12 to 14 on page 6.
4. Lubricate trigger pivot holes (a) bracket guide (b), and rod (13).
5. Install trigger (29) with rod (13) and retaining rings (8).
6. Apply high strength anaerobic sealant (red) to threads on valve seat (35). Torque valve seat into gun body (17) to 26–32 ft-lb (35.3–43.4 N•m).
7. Fig. 5. Lubricate trigger lock housing area (c) and apply low strength anaerobic sealant to screws (9).
8. Install spring (7) into gun body (17). Place ball (2) in center of spring. (Use small amount of grease to hold ball to spring.)
9. Align trigger lock detent (d) with ball (2). Compress ball (2) and spring (7) with trigger lock (15) until trigger lock is seated in housing.
10. While holding trigger lock (15) in place, install gun handle (14). Secure gun handle with screws (9). Torque screws to 6–10 in-lb (7.9–9.0 N•m).

11. Install fluid tube assembly (19) through gun handle (14) and screw it into gun body (17). Torque fluid tube assembly (19) to 200–250 in-lb (22.6–28.2 N•m). Secure fluid tube assembly with setscrew (42), and torque setscrew to 6–10 in-lb (0.7–1.13 N•m).

### **CAUTION**

To avoid loosening connections and damaging gun, grip gun body (17), not handle (14), when tightening fluid tube assembly (19).

12. Adjust free travel of trigger as instructed under **Adjusting Valve**, page 5.
13. Follow steps 15 to 19 on page 6 to finish assembling gun.



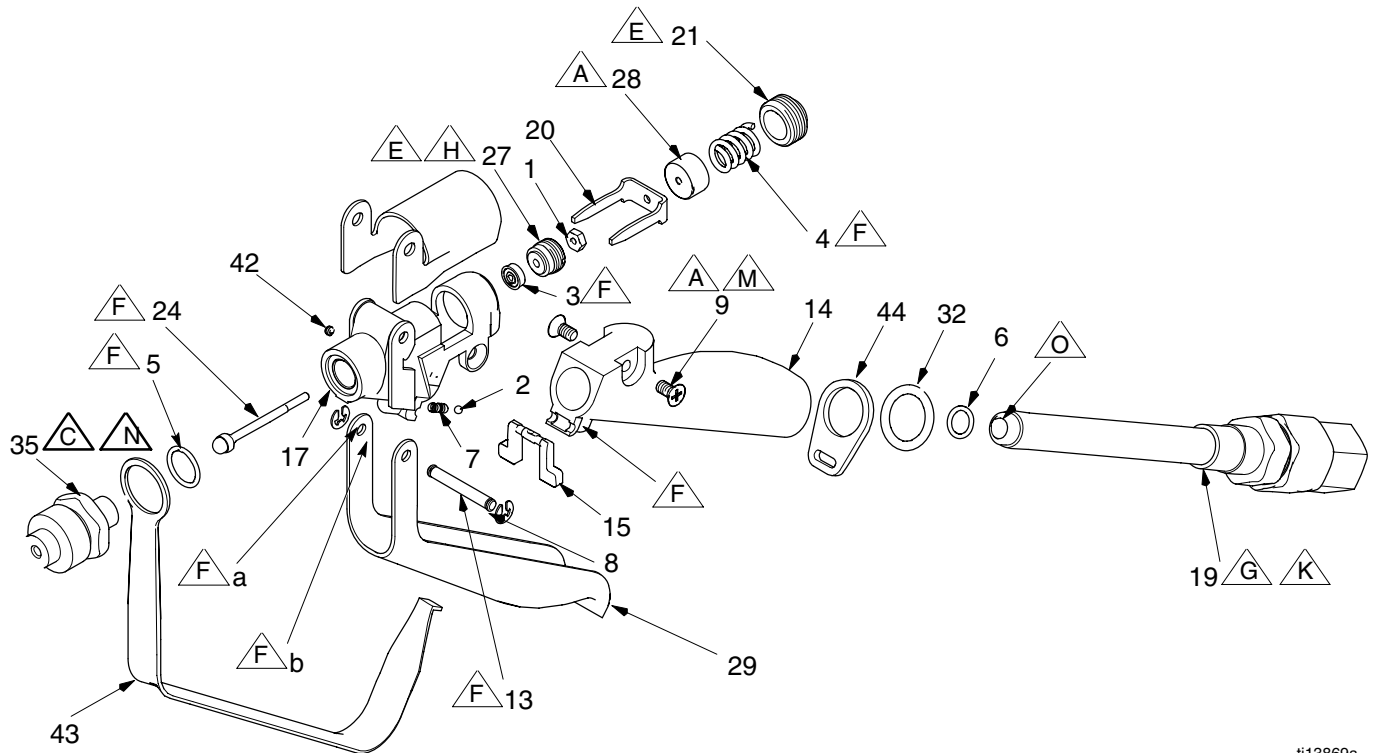
### NOTES:

- A** Torque to 6–10 in-lb (0.68–1.13 N•m)
- F** Apply lithium base grease
- M** Apply low strength anaerobic sealant (*blue*)

**Fig. 5**



# Service



ti13869a

## NOTES:











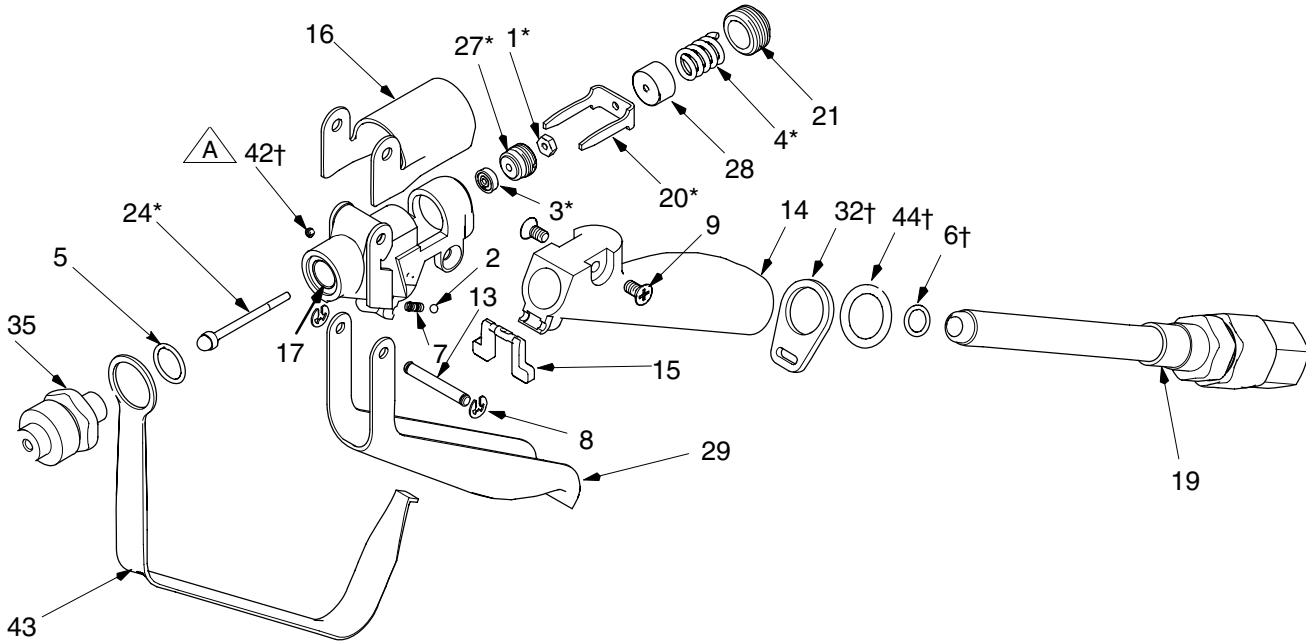
- |   |  |
|---|--|
|  Torque to 6–10 in-lb (0.68–1.13 N•m)  |  Torque to 200–250 in-lb (22.6–28.2 N•m)              |
|  Torque to 26–32 ft-lb (35.3–43.4 N•m)   |  Apply low strength anaerobic sealant ( <i>blue</i> ) |
|  Apply lithium base grease to threads  |  Apply high strength anaerobic sealant ( <i>red</i> ) |
|  Apply lithium base grease   |  Apply anti-seize lubricant to threads                |
|  When removing fluid hose, use wrench on end of fluid tube assembly (19) hex to avoid loosening fluid tube assembly (19) |  |
|  Torque to 100–125 in-lb (11.3–14.1 N•m)   |  |

Fig. 6

# Parts

## Model 245820



ti13869a

Ref. No.	Part No.	Description	Qty.	Ref. No.	Part No.	Description	Qty.
1*	100975	NUT, hex; No. 5—40	1	21	188247	SCREW, spring adjustment	1
2	102233	BALL; stainless steel	1	24*	236234	STEM, valve	1
3*	102921	SEAL, v-block; polyurethane	1	27*	188271	RETAINER, seal	1
4*	102924	SPRING, compression	1	28	188275	HOUSING, spring	1
5	102982	O-RING; PTFE	1	29	237604	TRIGGER	1
6†	111457	O-RING; PTFE	1	32†	155332	O-RING	1
7	111902	SPRING, compression	1	35*	245655	SEAT, valve	1
8	112410	RING, retaining	2	42†	103187	SETSCREW	1
9	111904	SCREW, handle; flat hd	2	43	15A555	GUARD, trigger	1
13	15Y468	ROD, trigger	1	44†	15A556	RETAINER, guard	1
14	188231	HANDLE, plastic	1				
15	188232	LOCK, trigger	1				
16	15Y469	COVER, gun	1				
17	15A977	HOUSING, fluid; stainless steel	1				
19	24B570	KIT, fluid tube swivel assembly	1				
20*	188246	LINK	1				

\* Parts included in Repair Kit 245808, purchased separately.

† Parts included in Repair Kit 24B570, purchased separately.

▲ Replacement Instruction and Warning labels are available at no cost.

# Technical Data

**Maximum Working Pressure** . . . . 4000 psi (280 bar)  
**Outlet Port Size** . . . . . 7/8–14  
**Inlet Port Size** . . . . . 1/2 npt(f)  
**Valve Orifice** . . . . . 0.19 in. (4.83 mm) dia. with  
0.25 in. (6.35 mm) carbide ball  
**Height** . . . . . 5.60 in. (142.24 mm)  
**Width** . . . . . 1.20 in. (30.48 mm)  
**Length** . . . . . 11.40 in. (289.56 mm)

**Weight** . . . . . 33.79 oz. (958 g)

## Wetted Parts

Fluid Section . . . . . 17–4 PH Stainless Steel  
Fluid Tube . . . . . 300 Series Stainless Steel  
Valve Needle . . . . . Carbide and 17–4 PH  
Stainless Steel  
Valve Seat . . . . . Carbide and 17–4 PH  
Stainless Steel  
Other . . . . . Stainless Steel, Fluoroelastomer, PTFE,  
and Polyurethane

# Graco Warranty/Garantie Graco

## Garantía Graco/Garantia da Graco

Graco warrants all equipment listed in this manual which is manufactured by Graco and bearing its name to be free from defects in material and workmanship on the date of sale to the original purchaser for use. With the exception of any special extended or limited warranty published by Graco, Graco will, for a period of twelve months from the date of sale, repair or replace any part of the equipment determined by Graco to be defective. This warranty applies only when the equipment is installed, operated and maintained in accordance with Graco's written recommendations.

This warranty does not cover, and Graco shall not be liable for general wear and tear, or any malfunction, damage or wear caused by faulty installation, misapplication, abrasion, corrosion, inadequate or improper maintenance, negligence, accident, tampering, or substitution of non-Graco component parts. Nor shall Graco be liable for malfunction, damage or wear caused by the incompatibility of Graco equipment with structures, accessories, equipment or materials not supplied by Graco, or the improper design, manufacture, installation, operation or maintenance of structures, accessories, equipment or materials not supplied by Graco.

This warranty is conditioned upon the prepaid return of the equipment claimed to be defective to an authorized Graco distributor for verification of the claimed defect. If the claimed defect is verified, Graco will repair or replace free of charge any defective parts. The equipment will be returned to the original purchaser transportation prepaid. If inspection of the equipment does not disclose any defect in material or workmanship, repairs will be made at a reasonable charge, which charges may include the costs of parts, labor, and transportation.

Graco's sole obligation and buyer's sole remedy for any breach of warranty shall be as set forth above. The buyer agrees that no other remedy (including, but not limited to, incidental or consequential damages for lost profits, lost sales, injury to person or property, or any other incidental or consequential loss) shall be available. Any action for breach of warranty must be brought within two (2) years of the date of sale.

**GRACO MAKES NO WARRANTY, AND DISCLAIMS ALL IMPLIED WARRANTIES OF MERCHANTABILITY AND FITNESS FOR A PARTICULAR PURPOSE IN CONNECTION WITH ACCESSORIES, EQUIPMENT, MATERIALS OR COMPONENTS SOLD BUT NOT MANUFACTURED BY GRACO.** These items sold, but not manufactured by Graco (such as electric motors, gas engines, switches, hose, etc.), are subject to the warranty, if any, of their manufacturer. Graco will provide purchaser with reasonable assistance in making any claim for breach of these warranties.

In no event will Graco be liable for indirect, incidental, special or consequential damages resulting from Graco supplying equipment hereunder, or the furnishing, performance, or use of any products or other goods sold hereto, whether due to a breach of contract, breach of warranty, the negligence of Graco, or otherwise.

### **FOR GRACO CUSTOMERS SPEAKING FRENCH, SPANISH AND PORTUGUESE**

The parties acknowledge that they have required that the present document, as well as all documents, notices and legal proceedings entered into, given or instituted pursuant hereto or relating directly or indirectly hereto, be drawn up in English.

### **POUR LES CLIENTS DE GRACO PARLANT FRANÇAIS**

Les parties reconnaissent avoir convenu que la rédaction du présent document, ainsi que tous les documents, avis et procédures judiciaires exécutés, donnés ou intentés à la suite de ou en rapport, directement ou indirectement, avec les procédures concernées, sera en anglais.

### **PARA CLIENTES DE GRACO DE HABLA ESPAÑÓLES**

Las partes reconocen que han requerido que el presente documento, al igual que todos los documentos, notificaciones y procedimientos legales en que se incurra conforme a esta información o en relación indirecta o directa con la misma, sea redactado en inglés.

### **PARA CLIENTES DE LÍNGUA PORTUGUESA DA GRACO**

As partes confirmam que solicitaram que o presente documento, assim como todos os demais documentos, notas e processos legais inseridos, atribuídos ou instituídos de acordo com o mesmo ou relacionados direta ou indiretamente a este documento, fossem redigidos em inglês.

### **ADDITIONAL WARRANTY COVERAGE**

Graco does provide extended warranty and wear warranty for products described in the "Graco Contractor Equipment Warranty Program".

## Graco Phone Number

For the latest information about Graco products, visit [www.graco.com](http://www.graco.com).

**TO PLACE AN ORDER**, contact your Graco distributor, or call **1-800-690-2894 Toll Free**, to identify the distributor closest to you.

*All written and visual data contained in this document reflects the latest product information available at the time of publication. Graco reserves the right to make changes at any time without notice.*

*For patent information, see [www.graco.com/patents](http://www.graco.com/patents).*

Original instructions. This manual contains English. MM 309495

**Graco Headquarters:** Minneapolis

**International Offices:** Belgium, China, Japan, Korea

**GRACO INC. AND SUBSIDIARIES • P.O. BOX 1441 • MINNEAPOLIS MN 55440-1441 • USA**

Copyright 2002, Graco Inc. All Graco manufacturing locations are registered to ISO 9001.

[www.graco.com](http://www.graco.com)

Revised January 2013