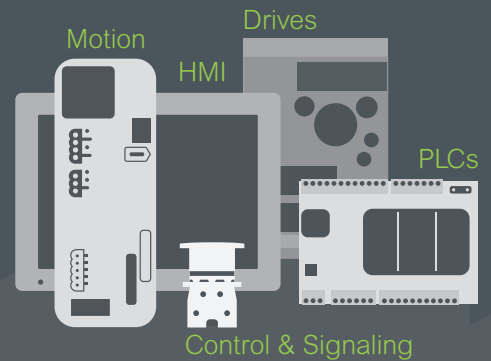


Introducing the **Easy Series**

Essential automation & control products

When just enough is just right!



Easy Harmony XA2

Control and signaling

Ø 22 mm, plastic pushbuttons, switches and pilot lights

Quick access to product information

Get technical information about your product



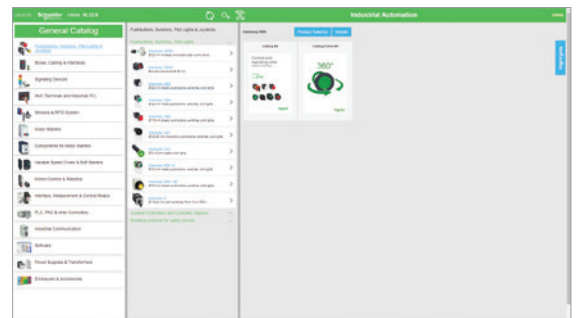
Each commercial reference presented in a catalog contains a hyperlink. Click on it to obtain the technical information of the product:

- Characteristics, Dimensions and drawings, Mounting and clearance, Connections and schemas, Performance curves
- Product image, Instruction sheet, User guide, Product certifications, End of life manual

Find your catalog



- > With just 3 clicks, you can reach the Industrial Automation and Control catalogs, in both English and French
- > Download Digi-Cat with this [link](#)



- Updated quarterly
- Embeds product selectors and configurators, 360° images, training centers
- Optimized search by commercial reference

Select your training



- > Find the right [Training](#) for your needs on our Global website
- > Locate the training center with the selector tool, using this [link](#)



General contents

Easy Harmony™ XA2

■ General presentation	page 2
Selection guide	page 4
■ General	
□ Presentation	page 6
□ Description	page 7
■ References	
□ Spring return pushbuttons	page 9
□ Mushroom head pushbuttons, spring return	page 9
□ Pushbuttons, push-push	page 10
□ Emergency switching off pushbuttons, push-pull and turn to release.....	page 10
□ Selector switches, with standard handle or with long handle.....	page 11
□ Key switches.....	page 11
□ Illuminated pushbuttons, flush push with integral LED	page 12
□ Bulbs and associated accessories for illuminated pushbuttons	page 12
□ Contact functions for all XA2 pushbuttons and switches	page 12
□ Pilot lights	page 13
□ Product reference index	page 15

Easy Harmony XA2:
 - modular, plastic pushbuttons and switches with metallic-look ring,
 - complete, plastic pilot lights with integral LED

Fit for purpose

All the products composing the Easy Harmony range have been designed to be used in numerous control and signaling applications:

- > customers can easily select the key functions for standard applications
- > their diameter, Ø 22 mm / 0.866 in. makes them suitable for standard OEM and panel builder applications.
- > with plastic material, they provide a solution for industrial applications demanding a high resistance to chemical agents.

Ease and comfort of choice

The range is available in the form of complete units. It involves:

- > modular, plastic pushbuttons and switches with metallic-look ring
 The modular design allows flexible and simple setup for complete products: the right product can be chosen among various types of heads and 2 types of functions are proposed (contact and signaling)
- > complete pilot lights, provided with integral LED.

All products are fitted with screw clamp terminals allowing fast and easy connection.

Contact functions

- Pushbuttons with spring return and push-push (marked or unmarked)
- Selector switches and key switches, 2 or 3 positions
- Emergency switching off pushbuttons with push-pull and turn to release



Contact and signaling functions

- Illuminated pushbuttons with integral LED, spring return and flush push



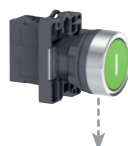
Signaling functions

- Pilot lights with integral LED



Groomed ergonomics

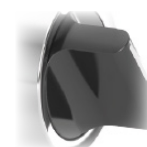
- > Metallic-look ring on pushbuttons and switches gives a modern look
- > Ergonomic curve on the selector switches allows flexible operation



Metallic-look ring



Ergonomic curve



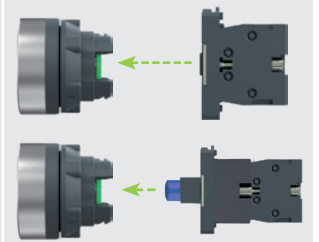
Easy installation

- > Installation of pushbuttons is simple and easy
- > Mounting by single nut to the control panel
- > Anti-rotation plate prevents the pushbutton head from rotation

- Single lock ring for mounting on control panel



- Clip-together component system for head, body, contacts, and LED light blocks



Proven robustness

- > Conforming to most demanding international standards and approvals
- > Tested and certified performance
- > Excellent resistance to mechanical shock and vibration
- > Supports extended temperature range from - 40° C to + 70° C



Helps customer to
improve the reliability

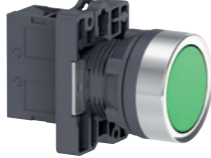




Service and availability

- > Supported by the service of Schneider Electric
- > Wide availability throughout an extensive distribution network

 Up to IP 65 degree of protection

Control and signaling units Ø 22

Easy Harmony XA2, plastic
Pushbuttons, switches and pilot lights

Type of products	Contact functions		
	Pushbuttons	Emergency switching off pushbuttons	Selector and key switches
			
			
Description of range	<ul style="list-style-type: none"> ■ Pushbuttons, spring return: flush push, mushroom head, and push-push ■ Emergency switching off pushbuttons: turn to release and push-push ■ Selector switches, 2 or 3-position: standard or long handle ■ Key switches 		
Features	<p>Products: Complete units</p> <p>Shape of head: Circular</p>		
Drilling or cut-out for mounting	Ø 22 mm/0.866 in.		
Degree of protection	IP 65 conforming to standard IEC 60529		IP 54 conforming to standard IEC 60529 Selector switches: IP 65 Key switches: IP 54
International standards	IEC 60947-5-1, EN 60947-5-1, GB/T 14048.1-93, GB/14048.5-93		
Product certification	CCC, EAC, CE		
Cabling	Screw clamp terminal connections		
Mounting	Panel thickness: Ø 1 to 6 mm/ 0.04 to 0.24 in.		
Type references	XA2EA●●/EA●●●●/EC●●/ XA2ER●●/EH0●●	XA2ET●●/ES●●●	XA2ED●●/EJ●●/EG●●
Pages	9	10	11

Contact and signaling functions		Signaling functions
Illuminated pushbuttons		Pilot lights
		
<ul style="list-style-type: none"> ■ Illuminated pushbuttons with integral LED, spring return: flush push 		<ul style="list-style-type: none"> ■ Pilot lights with integral LED
Complete units		
Circular		
Ø 22 mm/0.866 in.		
IP 65 conforming to standard IEC 60529		IP 40 conforming to standard IEC 60529
IEC 60947-5-1, EN 60947-5-1, GB/T 14048.1-93, GB/14048.5-93		
CCC, EAC, CE		
Screw clamp terminal connections		
Ø 1 to 6 mm/ 0.04 to 0.24 in.		
XA2EW3●●●		XA2EV●●●LC, XA2EV●D●LC
12		13

Control and signaling units Ø 22

Easy Harmony XA2, plastic

Pushbuttons, switches and pilot lights

Presentation

The Easy Harmony XA2 range of Ø 22/0.866 in. plastic control and signaling units combines simplicity of installation, flexibility and robustness. It meets the requirements of the majority of industrial applications. The metallic-look ring design on the pushbuttons and switches gives them a modern look. These products are available in the form of complete units.

■ This range includes:

- Pushbuttons, selector/key switches, Emergency switching off pushbuttons for Start/Stop control of machines and installations, adjustment, and parametering (contact functions),
- Illuminated pushbuttons for control and signaling (contact functions and signaling functions),
- Pilot lights (signaling functions).

■ The pushbutton, switch (illuminated and non-illuminated) and pilot light control offer comprises:

- Flush, spring return marked and unmarked pushbuttons, mushroom head spring return pushbuttons,
- Illuminated pushbuttons, spring return, with integral LED,
- Ø 40/1.575 in., Ø 30/1.181 in., and Ø 60/2.362 in. Emergency switching off pushbuttons,
- Selector switches with standard and long handle,
- Key switches,
- Pilot lights with integral LED,
- Various accessories.

Installation

■ Easy Harmony XA2 products are both simple and quick to install:

- Mounting by a single nut to the control panel,
- Body/fixing collar simply clip on the head,
- Anti-loosening system for screw clamp terminals of contact blocks.

■ Type of connection:

- screw clamp terminals.

Environment

The performance features of the Easy Harmony XA2 range meets the following specifications:

■ Degrees of protection conforming to standard IEC 60529:

- IP 65 for pushbuttons, Emergency switching off pushbuttons, illuminated pushbuttons
- IP 54 for key select switch
- IP 40 for pilot lights

■ International standards:

- IEC 60947-5-1, EN 60947-5-1, GB/T 14048.1-93, GB/14048.5-93

■ Product certification:

- CCC, EAC, CE

For more technical information, please refer to our website www.schneider-electric.com.

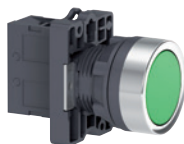
Description

The Ø 22/0.866 in. range of control and signaling units comprises complete units

Functions

Contact functions

Pushbuttons, spring return



Type of push	Flush push, unmarked	Flush push, marked	Mushroom head
Degree of protection	IP 65	IP 65	IP 65
Color	White, Black, Green, Yellow, Blue, and Red	Green, Black, White, and Red	Black, Green, Red, and Yellow
Reference	XA2EA●1/EA42	XA2EA33●1/EA43●2	XA2EC●1/EC42/ER21
Pages	9		

Pushbuttons, push-push



Type of push	Push-push
Degree of protection	IP 65
Color	White, Black, Green, Yellow, Blue, and Red
Reference	XA2EH0●1/EH042
Pages	10

Emergency switching off pushbuttons



Type of push	Turn to release and push-pull (Ø 30 mm/1.181 in., Ø 40 mm/1.575 in., Ø 60 mm/1.362 in.)
Degree of protection	IP 65
Color	Red and Black
Reference	XA2ET42/ES●42/ES422
Pages	10

Functions (continued)

Contact functions (continued)

Selector or key switches, 2 or 3-position



Type of push	Standard handle	Long handle	Key
Degree of protection	IP 65	IP 65	IP 54
Reference	XA2ED●●	XA2EJ●●	XA2EG21/EG●3
Page	11		

Combined functions: contact and signaling

Illuminated pushbuttons, spring return



Type of push	Flush push
Degree of protection	IP 65
LED	Integral LEDs, 24, 220-230 or 380-400 V
Color	White, Green, Red, Yellow, and Blue
Reference	XA2EW3●B1/3●M1/ 3●Q1
Pages	12

Signaling functions

Pilot lights



Degree of protection	IP 40
LED	Integral LEDs, 24, 110, 220-230 or 380-400 V
Color	White, Green, Red, Orange, Blue, and Yellow
Reference	XA2EV●●LC/EV●D●LC
Pages	13

Control and signaling units Ø 22

Easy Harmony XA2, plastic

Spring return pushbuttons, marked and unmarked

Mushroom head pushbuttons, spring return

PF13202



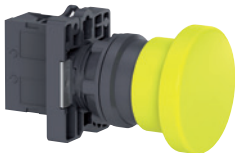
XA2EA31

PF132010



XA2EA4342

PF132014



XA2EC51

Spring return pushbuttons with flush push

Shape of head	Type of contacts		Color of push	Marking	Reference	Weight kg/lb
	N/O	N/C				
Unmarked						
	1	-	White	-	XA2EA11	0.032/0.071
			Black	-	XA2EA21	0.032/0.071
			Green	-	XA2EA31	0.032/0.071
			Yellow	-	XA2EA51	0.032/0.071
			Blue	-	XA2EA61	0.032/0.071
	-	1	Red	-	XA2EA42	0.032/0.071
Marked						
	1	-	Green	"I"	XA2EA3311	0.032/0.071
	1	-	Black	"↑"	XA2EA3351	0.032/0.071
	1	-	White	"↑"	XA2EA3341	0.032/0.071
	-	1	Red	"O"	XA2EA4322	0.032/0.071
	-	1	Red	"STOP"	XA2EA4342	0.032/0.071

Mushroom head pushbuttons, spring return

Shape of head	Type of contacts		Color of push	Diameter Ø (mm)/in.	Reference	Weight kg/lb
	N/O	N/C				
	1	-	Black	40/1.575	XA2EC21	0.052/0.115
	1	-	Green	40/1.575	XA2EC31	0.052/0.115
	-	1	Red	40/1.575	XA2EC42	0.052/0.115
	1	-	Yellow	40/1.575	XA2EC51	0.052/0.115
	1	-	Black	60/2.362	XA2ER21	0.058/0.128

Note: Please refer to our website www.schneider-electric.com for information on dimensions

Control and signaling units Ø 22

Easy Harmony XA2, plastic

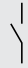


Pushbuttons, push-push

Emergency switching off pushbuttons

PF132017



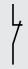


XA2EH021

Pushbuttons, push-push with flush push					
Shape of head	Type of contacts		Color of push	Reference	Weight kg/lb
					
	N/O	N/C			
	1	–	White	XA2EH011	0.04/0.088
	1	–	Black	XA2EH021	0.04/0.088
	1	–	Green	XA2EH031	0.04/0.088
	–	1	Red	XA2EH042	0.04/0.088
	1	–	Yellow	XA2EH051	0.04/0.088
	1	–	Blue	XA2EH061	0.04/0.088

PF132022



XA2ET42

Emergency switching off pushbuttons						
Shape of head	Type of push	Type of contacts	Color	Diameter Ø (mm)/in.	Reference	Weight kg/lb
						
		N/C				
	Push-pull	1	Red	40/1.575	XA2ET42	0.088/0.194
	Turn to release	1	Red	30/1.181	XA2ES442	0.056/0.123
			Red	40/1.575	XA2ES542	0.058/0.128
			Red	60/2.362	XA2ES642	0.064/0.141
			Black	30/1.181	XA2ES422	0.056/0.123

Note: Please refer to our website www.schneider-electric.com for information on dimensions

Control and signaling units Ø 22

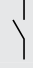
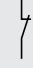




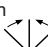




Easy Harmony XA2, plastic

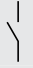
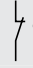



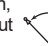
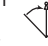

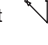
Selector switches, with standard or long handle

Key switches



XA2ED53

Selector switches, with standard handle or with long handle						
Shape of head	Type of push	Type of contacts		Number and type of positions	Reference	Weight kg/lb
						
		N/O	N/C			
	Standard handle	1	–	2 - stay put 	XA2ED21	0.04/0.088
		1	1	2 - stay put 	XA2ED25	0.054/0.119
		2	–	3 - stay put 	XA2ED33	0.054/0.119
		2	–	3 - spring return from 2 sides 	XA2ED53	0.054/0.119
	Long handle	1	–	2 - spring return 	XA2ED41	0.041/0.090
		1	1	2 - stay put 	XA2EJ21	0.041/0.090
		2	–	3 - stay put 	XA2EJ33	0.055/0.121
		2	–	3 - spring return from 2 sides 	XA2EJ53	0.055/0.121

Key switches						
Shape of head	Type of push	Type of contacts		Number and type of positions	Reference	Weight kg/lb
						
		N/O	N/C			
	Key	1	–	2 - stay put, one side pull-out 	XA2EG21	0.064/0.141
		2	–	2 - stay put, two sides pull-out 	XA2EG43	0.078/0.172
		2	–	2 - spring return, one side pull-out 	XA2EG63	0.078/0.172
		2	–	3 - spring return from 2 sides, middle pull-out 	XA2EG73	0.078/0.172
		2	–	3 - stay put, middle pull-out 	XA2EG33	0.078/0.172
		2	–	3 - stay put, 3 sides pull-out 	XA2EG03	0.078/0.172

Note: Please refer to our website www.schneider-electric.com for information on dimensions



XA2EG03

Control and signaling units Ø 22

Easy Harmony XA2, plastic

Illuminated pushbuttons with flush push

Bulbs for illuminated pushbuttons

Contact functions for all XA2 pushbuttons and switches



XA2EW36B1



DL1LED244



DL1LED246



ZB5AZ905



ZB5AZ902



ZA2EE102

Illuminated pushbuttons with integral LED

Shape of head	Type of push	Supply voltage V	Type of contacts		Color	Reference	Weight kg/lb
			N/O	N/C			
Ø 22	Flush push	~ / ≍ 24	1	N/O	White	XA2EW31B1	0.056/0.123
					Green	XA2EW33B1	0.056/0.123
					Red	XA2EW34B1	0.056/0.123
					Yellow	XA2EW35B1	0.056/0.123
					Blue	XA2EW36B1	0.056/0.123
					Red	XA2EW34B2	0.056/0.123
	~ 220-230	1	N/O	White	XA2EW31M1	0.064/0.141	
				Green	XA2EW33M1	0.064/0.141	
				Red	XA2EW34M1	0.064/0.141	
				Yellow	XA2EW35M1	0.064/0.141	
				Blue	XA2EW36M1	0.064/0.141	
				Red	XA2EW34M2	0.056/0.123	
~ 380-400	1	N/O	White	XA2EW31Q1	0.064/0.141		
			Green	XA2EW33Q1	0.064/0.141		
			Red	XA2EW34Q1	0.064/0.141		
			Yellow	XA2EW35Q1	0.064/0.141		
			Blue	XA2EW36Q1	0.064/0.141		
			Red	XA2EW34Q2	0.056/0.123		

Bulbs with BA 9s base fitting and associated accessories

Description	Characteristics	Color	Sold in lots of	Unit reference	Weight kg/lb
LEDs	~ / ≍ 24 V	White	10	DL1LED241	0.002/0.004
		Green	10	DL1LED243	0.002/0.004
		Red	10	DL1LED244	0.002/0.004
		Yellow	10	DL1LED245	0.002/0.004
		Blue	10	DL1LED246	0.002/0.004

Description	Application	Sold in lots of	Unit reference	Weight kg/lb
Bezel tool	Tightening head fixing nut	1	ZB5AZ905	0.016/0.035
Anti-rotation plate	Prevents head from rotation	10	ZB5AZ902	0.008/0.018

Contact functions (for all XA2 pushbuttons and switches)

Screw clamp terminal connections

Description	To be used with	Type of contacts		Sold in lots of	Unit reference	Weight kg/lb
		N/O	N/C			
Contact blocks	All XA2 pushbuttons and switches	1	–	1	ZA2EE101	0.014/0.031
		–	1	1	ZA2EE102	0.014/0.031

Note: Please refer to our website www.schneider-electric.com for information on dimensions



Pilot lights with integral LED					
Shape of head	Supply voltage V	Color of lens	Sold in lots of	Reference	Weight kg/lb
●	~ / ≡ 24	White	10	XA2EVB1LC	0.017/0.037
		Green	10	XA2EVB3LC	0.017/0.037
		Red	10	XA2EVB4LC	0.017/0.037
		Orange	10	XA2EVB5LC	0.017/0.037
		Blue	10	XA2EVB6LC	0.017/0.037
		Yellow	10	XA2EVB8LC	0.017/0.037
	~ 110	White	10	XA2EVF1LC	0.017/0.037
		Green	10	XA2EVF3LC	0.017/0.037
		Red	10	XA2EVF4LC	0.017/0.037
		Orange	10	XA2EVF5LC	0.017/0.037
		Blue	10	XA2EVF6LC	0.017/0.037
		Yellow	10	XA2EVF8LC	0.017/0.037
≡ 110	White	10	XA2EVFD1LC	0.017/0.037	
	Green	10	XA2EVFD3LC	0.017/0.037	
	Red	10	XA2EVFD4LC	0.017/0.037	
	Orange	10	XA2EVFD5LC	0.017/0.037	
	Blue	10	XA2EVFD6LC	0.017/0.037	
	Yellow	10	XA2EVFD8LC	0.017/0.037	
~ 220-230	White	10	XA2EVM1LC	0.017/0.037	
	Green	10	XA2EVM3LC	0.017/0.037	
	Red	10	XA2EVM4LC	0.017/0.037	
	Orange	10	XA2EVM5LC	0.017/0.037	
	Blue	10	XA2EVM6LC	0.017/0.037	
	Yellow	10	XA2EVM8LC	0.017/0.037	
≡ 220	White	10	XA2EVMD1LC	0.017/0.037	
	Green	10	XA2EVMD3LC	0.017/0.037	
	Red	10	XA2EVMD4LC	0.017/0.037	
	Orange	10	XA2EVMD5LC	0.017/0.037	
	Blue	10	XA2EVMD6LC	0.017/0.037	
	Yellow	10	XA2EVMD8LC	0.017/0.037	
~ 380-400	White	10	XA2EVQ1LC	0.017/0.037	
	Green	10	XA2EVQ3LC	0.017/0.037	
	Red	10	XA2EVQ4LC	0.017/0.037	
	Orange	10	XA2EVQ5LC	0.017/0.037	
	Blue	10	XA2EVQ6LC	0.017/0.037	
	Yellow	10	XA2EVQ8LC	0.017/0.037	

Note: Please refer to our website www.schneider-electric.com for information on dimensions

Life Is On



Learn more about our products at
www.schneider-electric.com

The information provided in this documentation contains general descriptions and/or technical characteristics of the performance of the products contained herein. This documentation is not intended as a substitute for and is not to be used for determining suitability or reliability of these products for specific user applications. It is the duty of any such user or integrator to perform the appropriate and complete risk analysis, evaluation and testing of the products with respect to the relevant specific application or use thereof. Neither Schneider Electric nor any of its affiliates or subsidiaries shall be responsible or liable for misuse of the information contained herein.

Design: Schneider Electric
Photos: Schneider Electric

Schneider Electric Industries SAS

Head Office
35, rue Joseph Monier - CS 30323
F-92500 Rueil-Malmaison Cedex
France

DIA5ED2140104EN
February 2020 - V4.0