

Operating Manual

MODEL: KS-700F-5



Please read carefully before use



Technical data

<u>Rate Voltage</u>	<u>220V</u>
<u>Rate Frequency</u>	<u>50 Hz</u>
<u>Rate input power</u>	<u>750(W)</u>
<u>Sanding speed</u>	<u>0-200(r/min)</u>
<u>Pad Size</u>	<u>φ377-380(mm)</u>
<u>Sponge disc</u>	<u>φ390(mm)</u>
<u>Sanding disc</u>	<u>φ370(mm)</u>

Product sketch

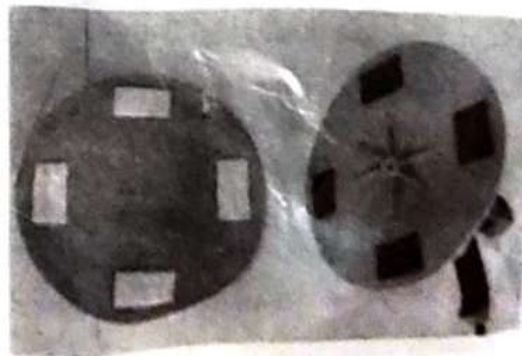


Assemble

Be sure to pull the plug out of the socket before repairing or replacing the spare arts.

Replace grinding disk

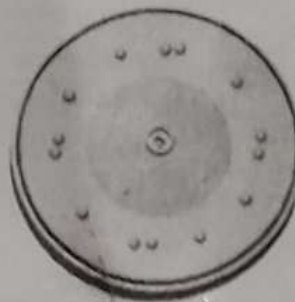
The utility model is characterized in that the utility model is characterized in that a sponge disc, a plastic grinding disk and a plastic disk sticking plate are bonded together by a magic paste.



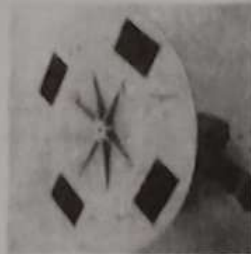
41	Right shell		1
42	Pan tapping screw	ST4*10	9
43	Pan tapping screw	ST4*14	2
44	Cable plate		1
45	Capacity	0.33uF+2*2200pf	1
46	Switch	FA4-12/2DB-1	1
47	Rod inductor	60uH	2
48	Left shell		1
49	Sponge pad		1

Unpacking instructions

a. unpacking state



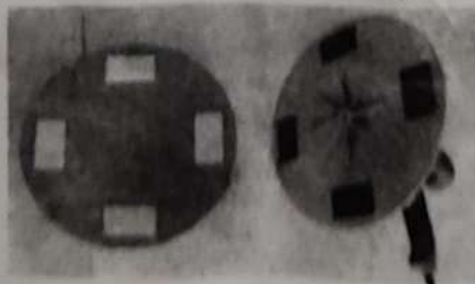
b. Install plastic adhesive tray (plastic adhesive disc on the output shaft, and then use a M6*12 cross countersunk head bolt fixed)



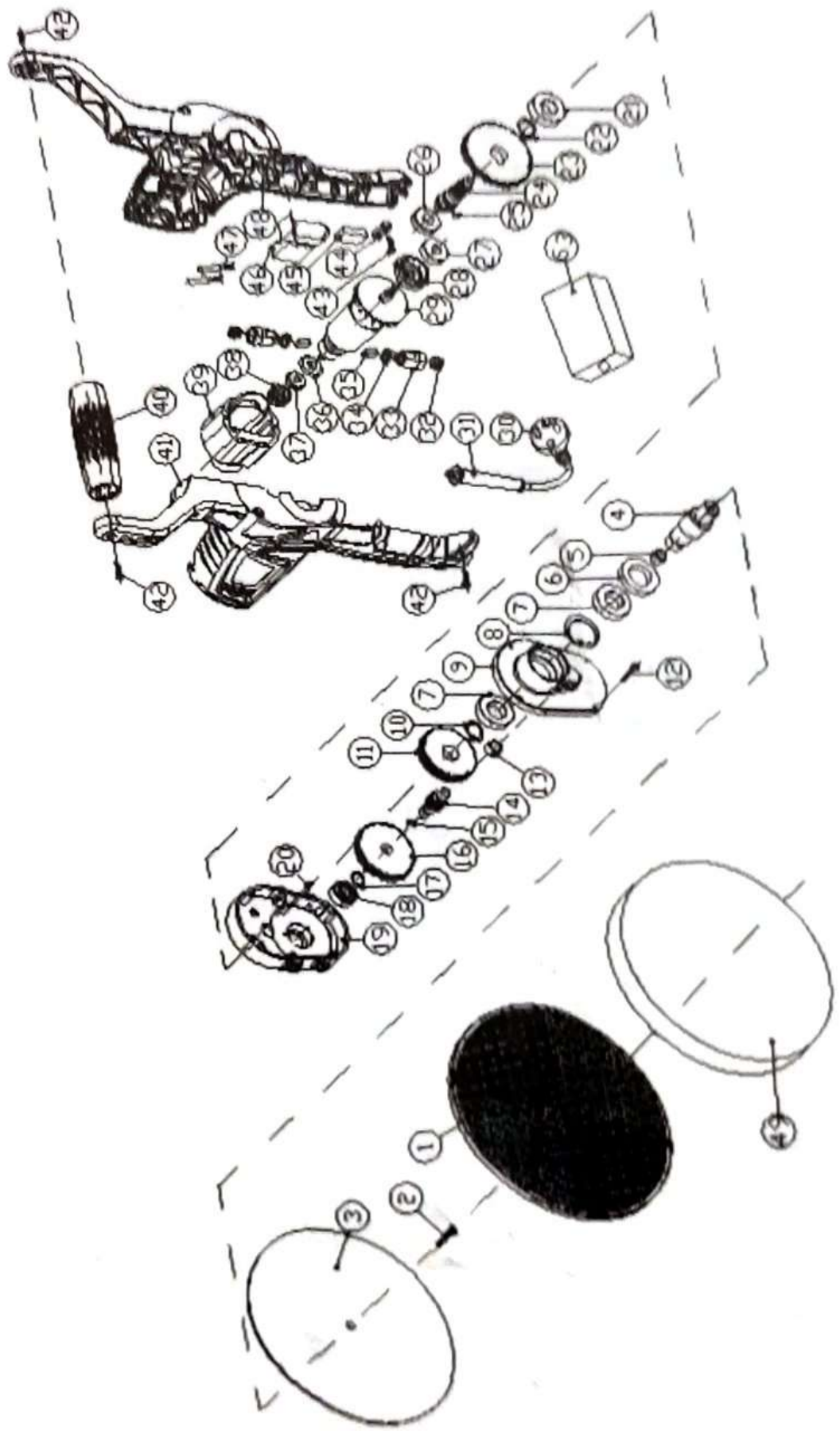
c. Install the plastic grinding disc (glue the plastic polishing plate to the plastic adhesive plate)



d. Install the sponge tray (attach the sponge tray to the plastic plate)



KS-700F-5 Explosive view



KS-700F-5 Parts list

1	Plastic disc		1
2	Cross screw	M6*25	1
3	Plastic tray		1
4	Output shaft		1
5	Needle bearing	HK0810	1
6	Oil Seal	Ø40*25	1
7	Bearing	6904RS	2
8	Circlip	Ø37	1
9	Housing		1
10	Shaft ring	Ø20	1
11	Big gear		1
12	Pan taping screw	ST4*40	1
13	Needle bearing	HK1010	1
14	Second main drive shaft		1
15	Flat key	4*4*6	1
16	follower gear		1
17	Shaft ring	Ø12	1
18	Bearing	60002Z	1
19	Center Cover		1
20	Local pin	Ø5*10	2
21	Bearing	60032Z	1
22	Shaft ring	Ø18	1
23	First driven tooth		1
24	Primary drive shaft		1
25	Steel ball	SØ6	1
26	Bearing	60012Z	1
27	Bearing	629RS	1
28	Aluminum bearing sleeve	629	1
29	Rotor		1
30	Cord	2*0.75mm ² , Two pins European plug. PVC cable	1
31	Cable sheeth		1
32	Carbon cover		2
33	Brush holder		2
34	Spring		2
35	Carbon brush	5*8*14(Lengthen)	2
36	Insulation sheet		1
37	Bearing	607RS (Dust free)	1
38	Bearing sleeve		1
39	Stator		1
40	Round handle		1

- a) Do not abuse the power tools, according to the use of appropriate power tools. Choosing the right tools will make you work more efficiently and safely.
- b) If the switch does not turn on or off the power supply, the power tool cannot be used. Electric tools that cannot be controlled by switches are dangerous and must be repaired.
- c) The plug and / or the battery box and the tool must be removed from the power supply before any adjustment, replacement, or storage of the power tool is carried out. This protective measure will reduce the risk of accidental start of the tool.
- d) Store unused electric tools outside the reach of children, and do not let people who are not familiar with the power tools or those who do not understand the operation of electric tools. Electric tools are dangerous in the hands of untrained users.
- e) Maintenance of power tools. Check whether the moving parts are in place or stuck, check the damage of the parts and other conditions that affect the operation of the power tools. In case of damage, power tools should be repaired before use. Many accidents are caused by poor maintenance of electric tools.
- f) Keep cutting tools sharp and clean. A well maintained tool with a sharp cutting edge is not easy to hold and easy to control.
- g) The use of power tools, accessories, and tools in accordance with the instructions, taking into account the operating conditions and the work carried out. The use of electric tools for operations that do not conform to their use may cause danger.

5) Repair

- a) Send your power tools to professional maintenance personnel and repair them with the same spare parts. This will ensure the safety of the power tools to be repaired.

According to the safety rules of the coarse polishing machine

The machine can be used for dry grinding. If rain seeps into an electric machine, it can cause an electric shock.

Be sure to use the working space to clean the dust in the machine and the vacuum pipe. The accumulation in the dust bag, dust in the pipeline, cleaning effect and easy to affect the machine performance.

Workplace must be kept clean. The different work dust is easy to produce chemical reaction after mixing. Light metal dust likely to cause fire or explosion.

Do not use power tools that have been damaged. If the power cord is damaged in the work, do not touch the damaged wire, and immediately unplug the plug. Damaged wires can increase the risk of electric shock.

In the course of work to hold the handle, not a single hand operation, hands must not touch the grinding knife.

Functional explanation

Read all warnings and instructions. Failure to comply with warning signs and instructions may cause electric shock, fire and / or other serious injury.

Use machines in accordance with regulations

KS-700F-5 grinding machine, design and production of two types of power tools, product safety and quality indicators according to GB3883.1 standards.

The utility model is characterized in that the utility model has the advantages of series excitation motor drive, light weight, large power, high efficiency, convenient operation, safety, etc.. The utility model is suitable for wet grinding on the concrete surface of the building walls, ceilings, etc., and the surface of the sand and stone walls, and the surface of the paint and cement.

Maintenance

Keep the tools clean, clean up the sundries and dust.

Often add grease (deceleration box) to keep the tool running flexible.

Check the power cord, plug, switch and so on to keep the tools in good condition.

The company's production of power tools are subject to strict quality inspection, if the machine is still in trouble, please turn the machine to the company's authorized customer service repair.

Carbon Brush replacement

There is a pair of auxiliary brushes in the random accessories. When the brush is worn to the limit, the brush should be replaced. Use the "one" screwdriver to reverse the brush cover counterclockwise, remove the original brush, fit the new brush into the brush holder and screw the cover.



Operation Chart



Plastic disc 377mm



Sponge disc 390mm



Sanding disc 370mm

Safety regulations

Warning! Read all warnings and instructions! Use or operate without following warnings and instructions will cause electric shock, fire and / or serious injury. In all of the following warnings, the term "power tools" refers to the electric drive (wire) power tools or battery powered (wireless) power tools.

1) Keep these safety instructions in a safe place!

- a) Keep the workplace clean and bright, chaotic and dark areas will cause accidents.
- b) Do not operate electric tools in explosive environment, such as flammable liquid, gas or dust. The spark generated by an electric tool ignites the dust or gas.
- c) Let the children and bystanders leave after the operation of electric tools. Lack of concentration can make you lose control of your tools.

2) Electrical safety

- a) Power tool plugs must match the socket. Never change the plug in any way. Electric power tools to be grounded shall not use any changeover plug. The non - modified plug and matching socket will reduce the risk of electric shock.
- b) Avoid contact with the ground surface, such as pipes, heat sinks and refrigerators. If your body grounding increases the risk of electric shock.
- c) Do not expose electric tools to rain or wet conditions. Water into electric tools will increase the risk of electric shock.
- d) No abuse of wire. Never use wire to carry, pull electric tools or pull out the plug. Keep wires away from heat, oil, sharp edges or moving parts. Damaged or winding cords increase the risk of electric shock.
- e) When using power tools outdoors, use external flexible cords for outdoor use. Suitable for outdoor use will reduce the risk of electric shock.
- f) If it is unavoidable to operate an electric tool in a wet environment, the residual current operated protective device (RCD) should be used. Using RCD can reduce the risk of electric shock.

3) Personal safety

- a) Stay alert, pay attention to the operation and stay awake when operating the power tools. When you feel tired, or when there is a drug, alcohol or treatment response, do not operate electric tools. An inadvertent omission in the operation of an electric tool can cause serious bodily injury.
- b) Use personal protective devices. Always wear goggles. Safety devices, such as the use of dust masks, anti slip safety shoes, safety helmets, hearing protection and other devices under appropriate conditions can reduce personal injury.
- c) Prevent accidental start. Make sure that the switch is in the off position when connecting the power supply and / or battery case, picking up or carrying the tool. The insertion of the plug into the plug on the switch on which the power is turned on or the switch on.
- d) Remove all key or wrench before power tool is turned on. The wrench or key left on the rotating part of the power tool will cause personal injury.
- e) Don't stretch too long. Always pay attention to footing and body balance. In this case, the electric tool can be well controlled.
- f) Dress appropriately. Do not wear loose clothing or jewelry. Keep your clothes, gloves and hair away from the moving parts. Loose clothes, accessories or may be caught in moving parts in the long hair.
- g) If a device is provided for connection with the dust removing and dust collecting equipment, make sure they are in good condition and use properly. The use of these devices can reduce the risk of dust.

4) Power tool use and precautions

