

# HARVIA CILINDRO

HPC904XW



## Features

Main material : Steel

H x W x D : 930.0 x 320.0 x 320.0 mm

Net weight (kg) : 9.5

Installation location : Floor

| ID       | GTIN          | Output (kW) | Sauna room size min - max m3 |
|----------|---------------|-------------|------------------------------|
| HPC904XW | 6417659030229 | 9 kW        | 8.0-14.0                     |

## Related products



HPC2



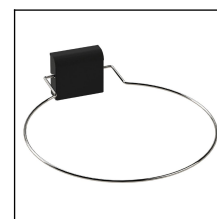
HPC3



HPC3L



HPC2L



SFE-D350

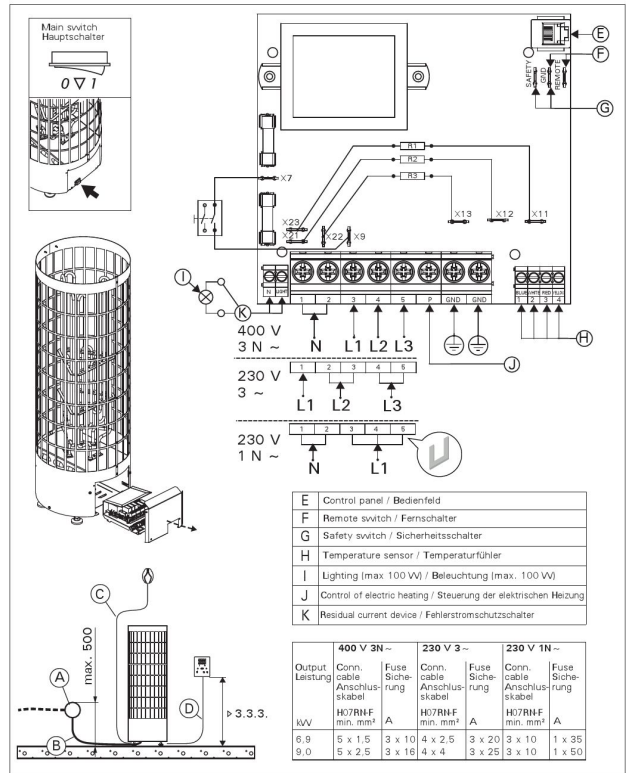
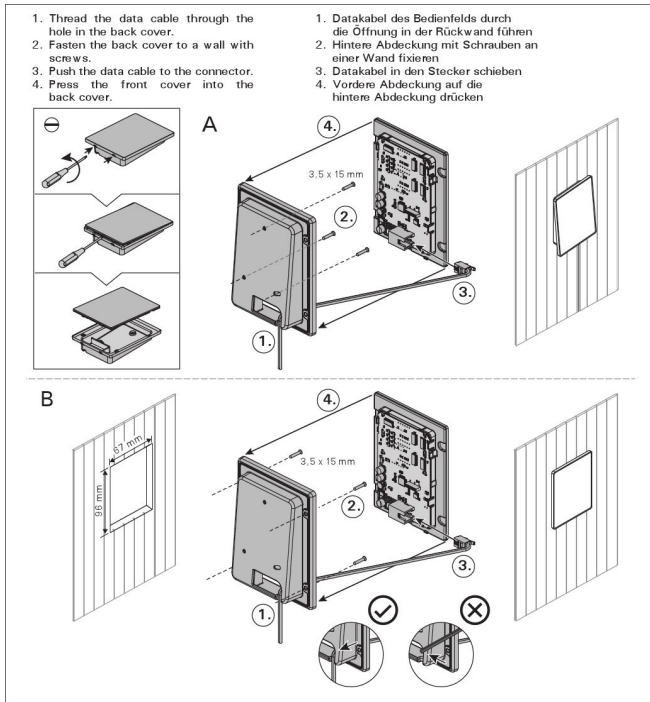
## Spare parts

| Product                            | ID      | Pcs |
|------------------------------------|---------|-----|
| Heating element 3000W/230V         | ZSE-259 | 3   |
| Sensor with reset button 125 degr. | WX248   | 1   |
| Data cable 5 m RJ16 black          | WX311   | 1   |
| Data cable extension 10 m          | WX313   | 1   |
| Control panel for CX170, CX110     | WX380   | 1   |
| On/off electric switch             | ZSK-684 | 1   |
| Support plate for heating elements | ZSC-140 | 1   |
| Circuit board XE                   | WX683   | 1   |
| Control panel Xenio Wifi           | WX694   | 1   |

## Technical details

| Technical data                     | Type / attribute   | HPC904XW        |
|------------------------------------|--|-----------------|
|                                    | Color  | Stainless Steel |
|                                    | Power output   | 9 kW            |
|                                    | Stone sizes  | Ø5–10 cm        |
|                                    | Stone amount (kg)  | 90              |
| Dimensions                         | Product width  | 320             |
|                                    | Product height   | 930             |
|                                    | Product depth (mm)   | 320             |
|                                    | Net weight (kg)  | 9.5             |
|                                    | Gross weight   | 10.9            |
|                                    | Package width  | 330             |
|                                    | Package height   | 975             |
|                                    | Package depth  | 330             |
| Safety and installation dimensions | Safety distance front (non-combustible materials)                              | 100             |
|                                    | Safety distance front (combustible materials)                                  | 100             |
|                                    | Safety distance right side (combustible materials)                             | 100             |
|                                    | Safety distance right side non-combustible materials                           | 100             |
|                                    | Safety distance left side (combustible materials)                              | 100             |
|                                    | Safety distance left side non-combustible materials                            | 100             |
|                                    | Safety distance side (non-combustible materials)                               | 100             |
|                                    | safety distance to the side wall (combustible materials)                       | 100             |
|                                    | Safety distance behind (non-combustible materials)                             | 100             |
|                                    | Safety distance behind (combustible materials)                                 | 100             |
|                                    | Safety distance (Ceiling)  | 950             |
|                                    | Room min. height(depends on connections and therefore from output, star/delta) | 1900            |
|                                    | Installation opening height  | 1900            |
| Installation opening width         | 520  |                 |
| Installation opening depth         | 520  |                 |

Technical images



Electrical connections