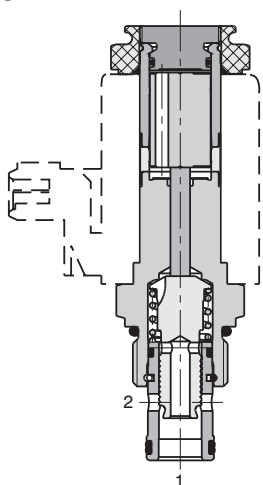


## 2/2 Directional Valve, Solenoid Operated, Spool Type, Direct Acting

### SD2E-B2

7/8-14 UNF • Q<sub>max</sub> 55 l/min (15 GPM) • p<sub>max</sub> 350 bar (5100 PSI)

#### Lightline



#### Technical Features

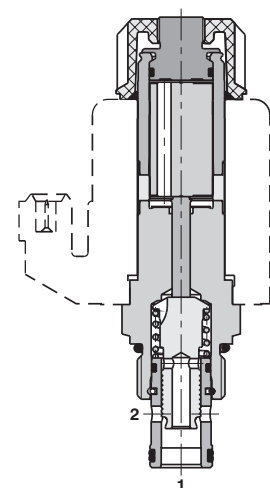
- › Hardened precision parts
- › High flow capacity
- › High transmitted hydraulic power
- › Wide range of manual overrides available
- › All ports may be fully pressurized
- › Variety of optional spools available
- › Coil interchangeability among SD\*-B\* product line
- › In the standard version, the valve is zinc-coated (240 h corrosion protection in NSS acc. to ISO 9227)

#### Functional Description

2-way, 2-position high pressure directional spool valve in form of a screw-in cartridge. The valve is used mainly to direct flow to actuators.

Model Code	2111	2112
Symbol		

#### High performance



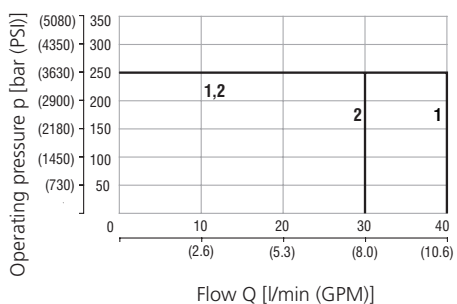
#### Technical Data

Valve size / Cartridge cavity		7/8-14 UNF-2A / B2 (C-10-2)	
		Lightline	High performance
Max. flow	l/min (GPM)	40 (10.6)	55 (14.5)
Max. operating pressure	bar (PSI)	250 (3630)	350 (5080)
Fluid temperature range (NBR)	°C (°F)	-30...60 (-22...140)	-30...80 (-22...176)
Fluid temperature range (FPM)	°C (°F)	-20...60 (-4...140)	-20...80 (-4...176)
Ambient temperature range	°C (°F)	-30...50 (-22...122)	-30...80 (-22...176)
Supply voltage tolerance	%	AC, DC: ± 10	
Max. switching frequency	1/h	15 000	
Weight without coil	kg (lbs)	0.22 (0.49)	0.29 (0.64)
		Datasheet	Type
General information		GI_0060	Products and operating conditions
Coil types		C_8007	C19B* C22B*
Valve bodies		In-line mounted: SB_0018 Sandwich mounted: SB-04(06)_0028	SB-B2* SB-*B2*
Cavity details / Form tools		SMT_0019	SMT-B2*
Spare parts		SP_8010	

#### Characteristics measured at v = 32 mm<sup>2</sup>/s (156 SUS)

##### Operating limits - Lightline

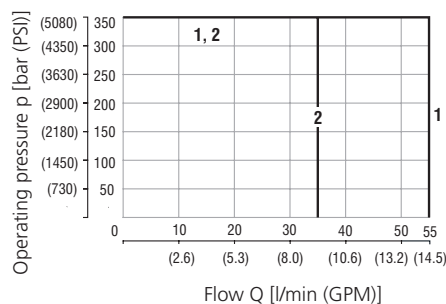
Oil 60 °C (140 °F) / Ambient temperature  
50 °C (122 °F) / Voltage U<sub>n</sub> -10% (21.6 V DC)



	Model	Connection
1	2111	2→1
2	2112	2→1

##### Operating limits - High performance

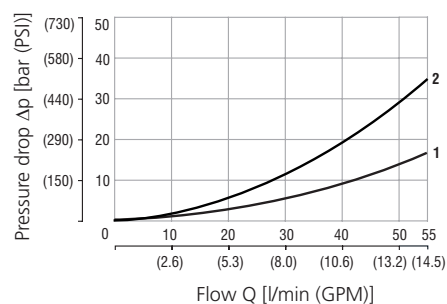
Oil 80 °C (176 °F) / Ambient temperature  
50 °C (122 °F) / Voltage U<sub>n</sub> -10% (21.6 V DC)



	Model	Connection
1	2111	2→1
2	2112	2→1

##### Pressure drop related to flow rate

- Lightline, High performance

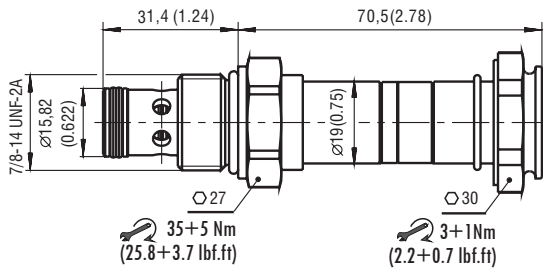


	Model	Connection
1	2111	2→1
2	2112	2→1

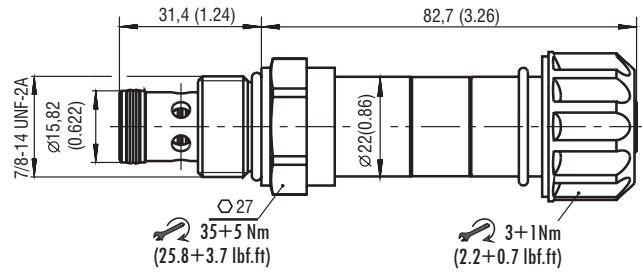
For operating limits under conditions and flow directions other than shown contact our technical support.

**Dimensions** in millimeters (inches)

**Lightline**



**High performance**



**Manual Override** in millimeters (inches)

No designation - standard	Designation M2 - rubber boot protected	Designation M5 - socket head screw, size 2.5	Designation M9 - without manual override
<p>L ~ 70,5 (2.78) H ~ 82,7 (3.26)</p>	<p>L ~ 82,0 (3.23) H ~ 100,0 (3.94)</p>	<p>L ~ 78,1 (3.07) H ~ 84,8 (3.34)</p>	<p>L ~ 70,5 (2.78) H ~ 82,7 (3.26)</p>

In case of solenoid malfunction or power failure, the spool of the valve can be shifted by manual override under the condition that the pressure in the back line does not exceed 25 bar (363 PSI). For alternative manual overrides contact our technical support.

**Ordering Code**

SD2E - B2 /     -

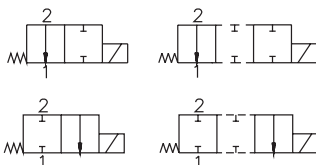
2/2 directional valve, solenoid operated, spool type, direct acting

Valve cavity  
7/8-14 UNF (C-10-2)

Model  
Lightline  
High performance

L  
H

Functional symbol



2I11

2I12

Surface treatment  
A zinc-coated (ZnCr-3), ISO 9227 (240 h)  
B zinc-coated (ZnNi), ISO 9227 (520 h)

No designation  
V

Seals  
NBR  
FPM (Viton)

No designation  
M2  
M5  
M9

Manual override  
standard  
rubber boot protected  
socket head screw  
without manual override